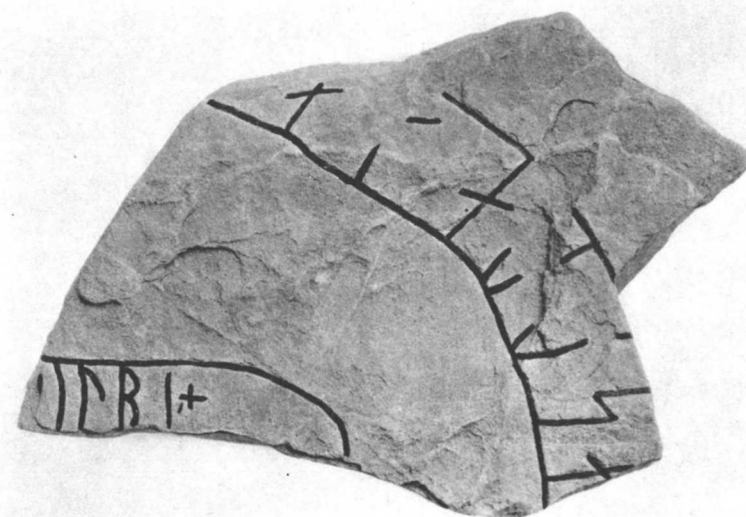
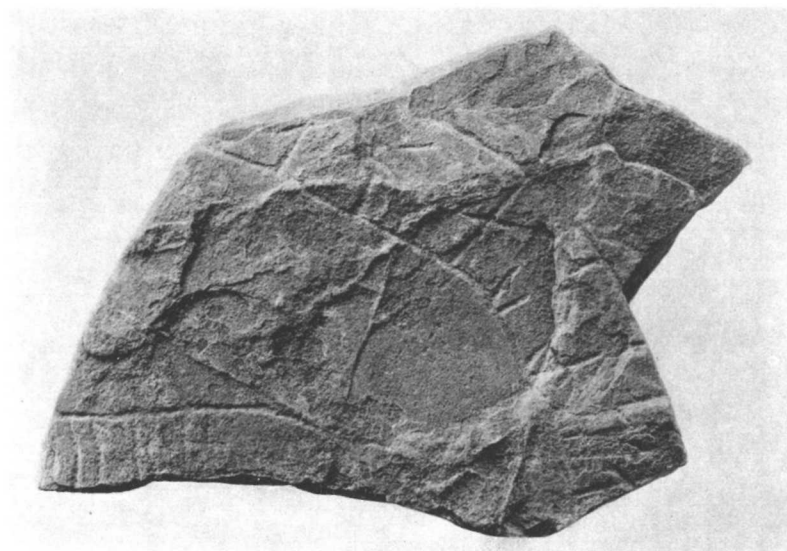


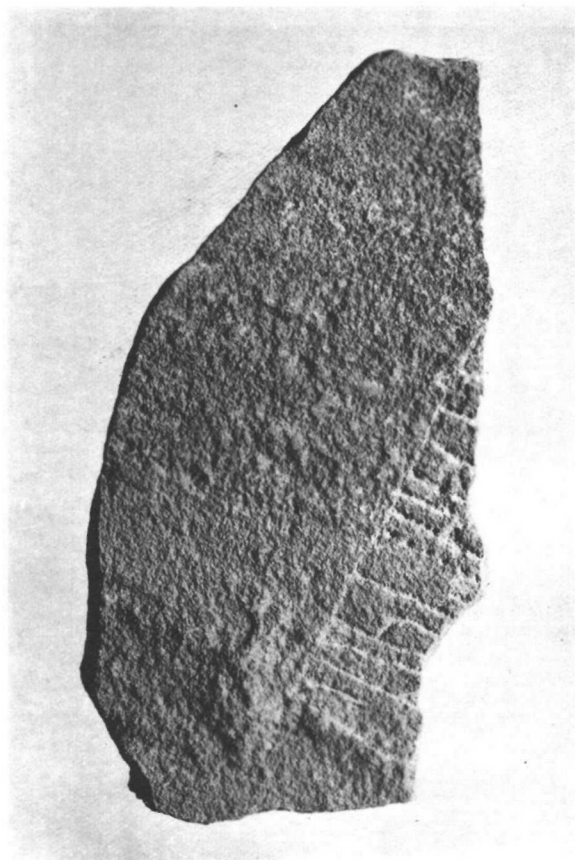
U 1. Adelsö kyrka.



U 3. Alsnö hus, Adelsö sn.
Nu i Statens Historiska Museum.



U 4. Björkö, Adelsö sn.
Nu i Statens Historiska Museum.



U 5. Björkö, Adelsö sn.
Nu i Statens Historiska Museum.



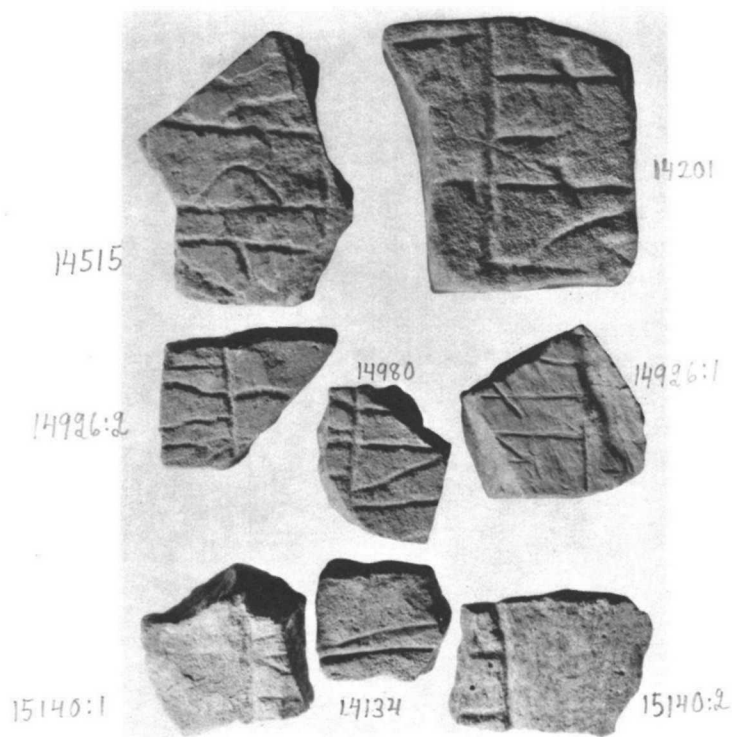
U 6. Björkö, Adelsö sn.
Nu i Statens Historiska Museum.



U 7. Björkö, Adelsö sn.



U 8. Björkö, Adelsö sn.



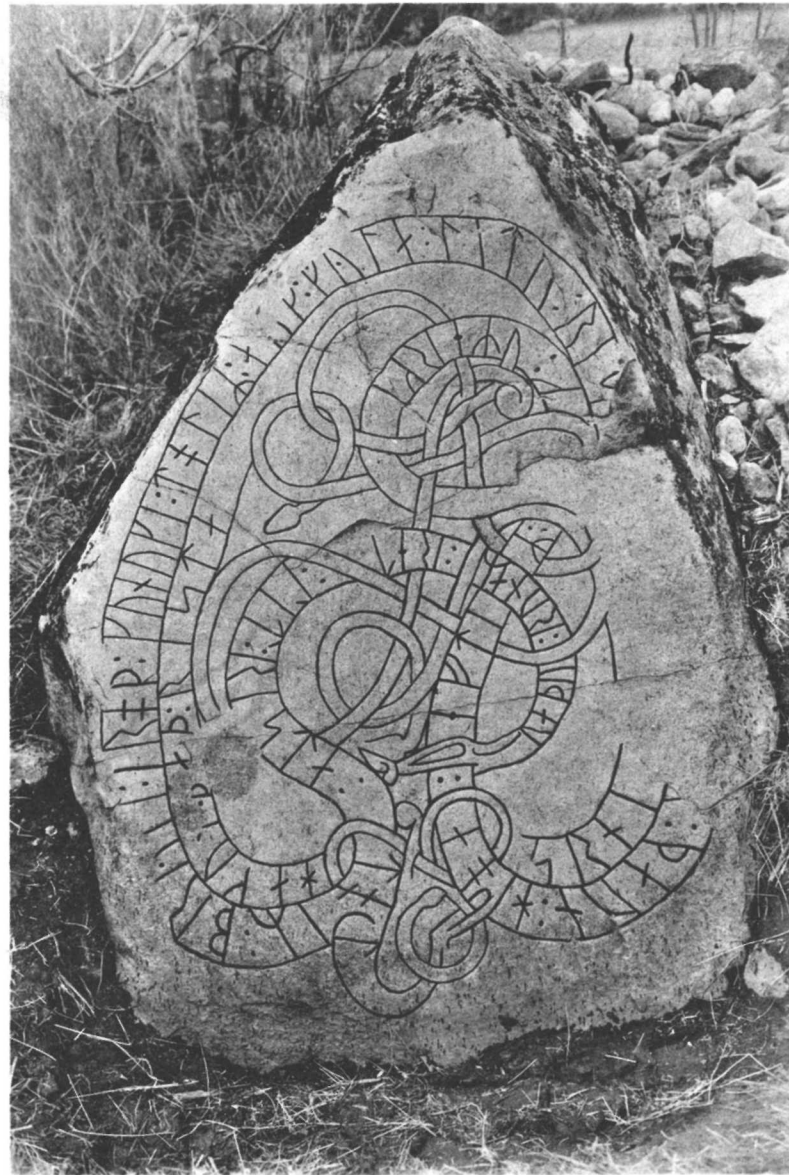
U 9. Björkö, Adelsö sn.
Nu i Statens Historiska Museum.



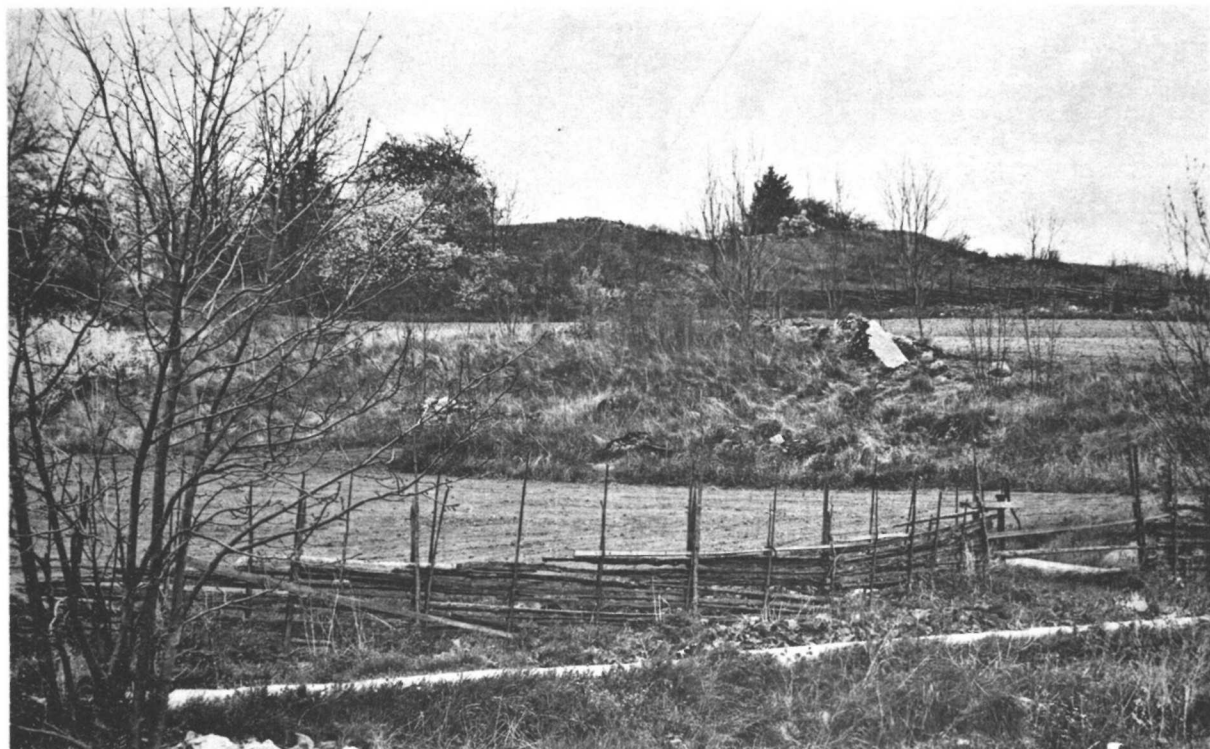
U 10. Dalby, Adelsö sn.
Nu i Adelsö kyrka.



U 11. Hovgården, Adelsö sn.



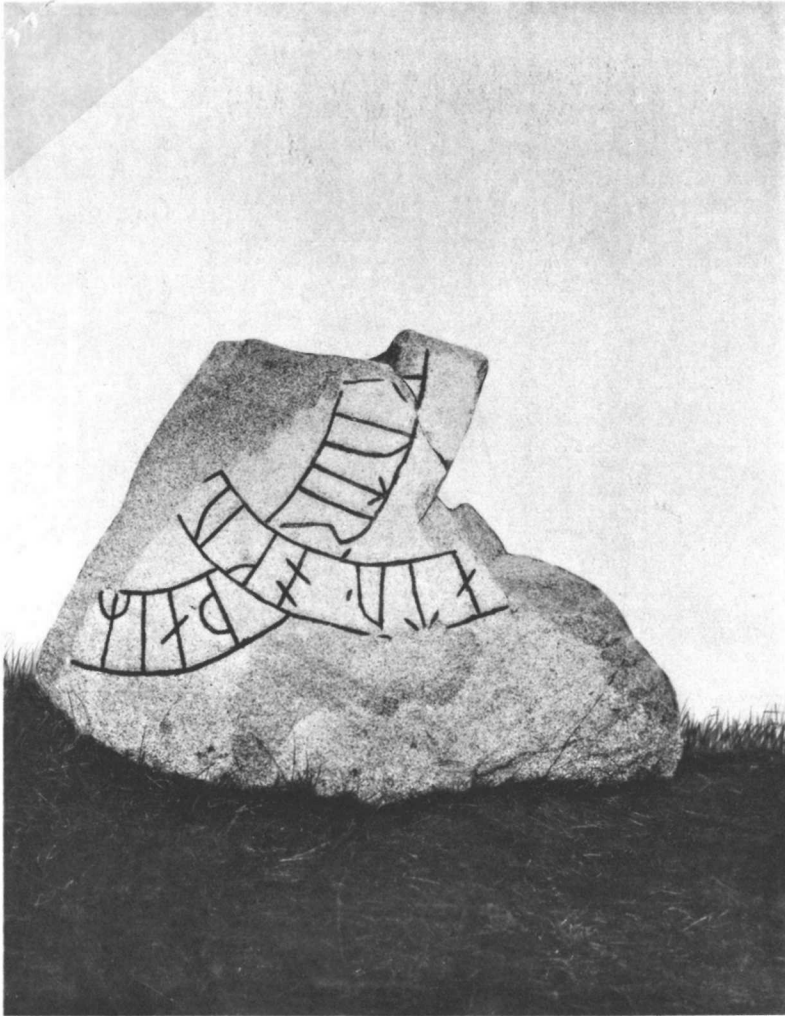
U 11. Hovgården, Adelsö sn.



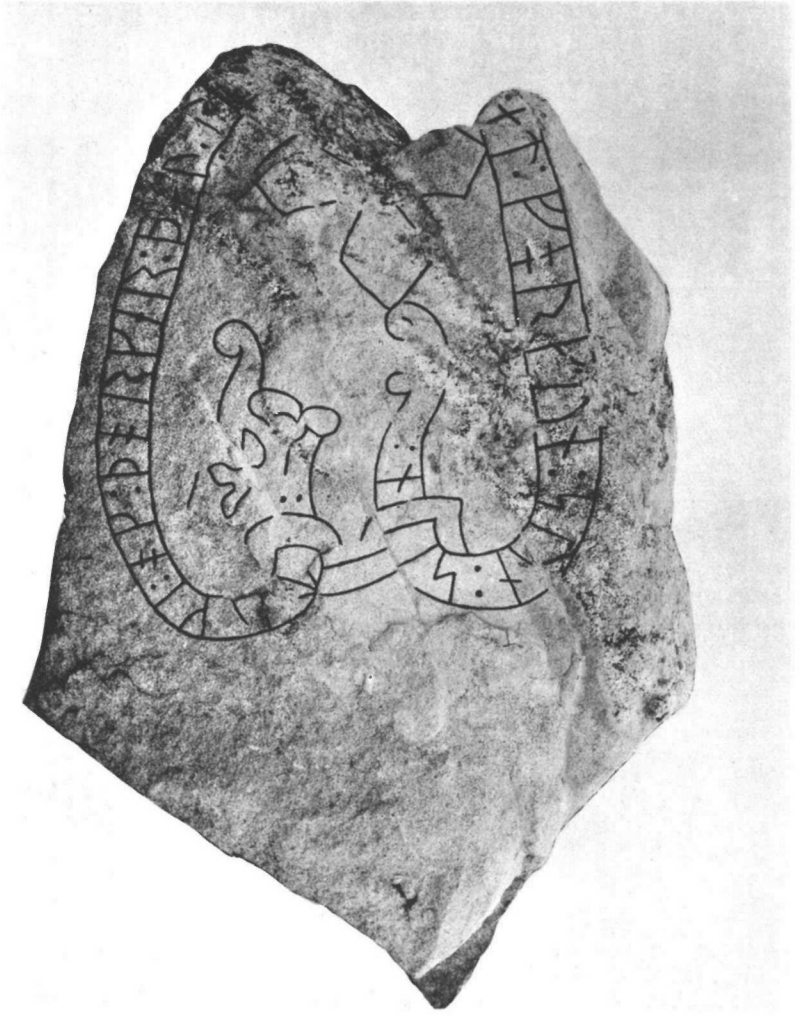
U 11. Hovgården, Adelsö sn.



U 13. »Kung Björns hög», Husby, Munsö sn.



U 13. Husby, Munsö sn.



U 14. Österås, Munsö sn.



U 15. Ekerö kyrka.
Nu i Statens Historiska Museum.



U 15. Ekerö kyrka.
Nu i Statens Historiska Museum.



U 17. Skytteholm, Ekerö sn.



U 17. Skytteholm, Ekerö sn.



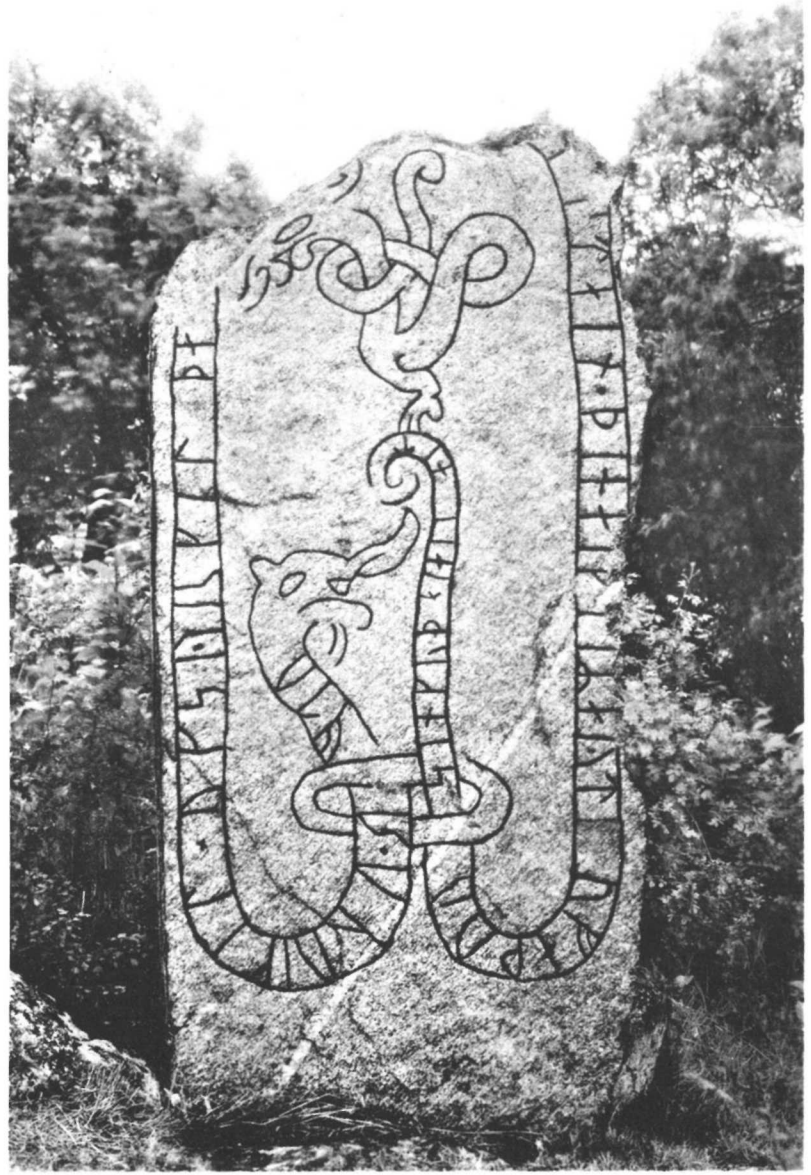
U 19. Älby, Ekerö sn.



U 19. Älby, Ekerö sn.



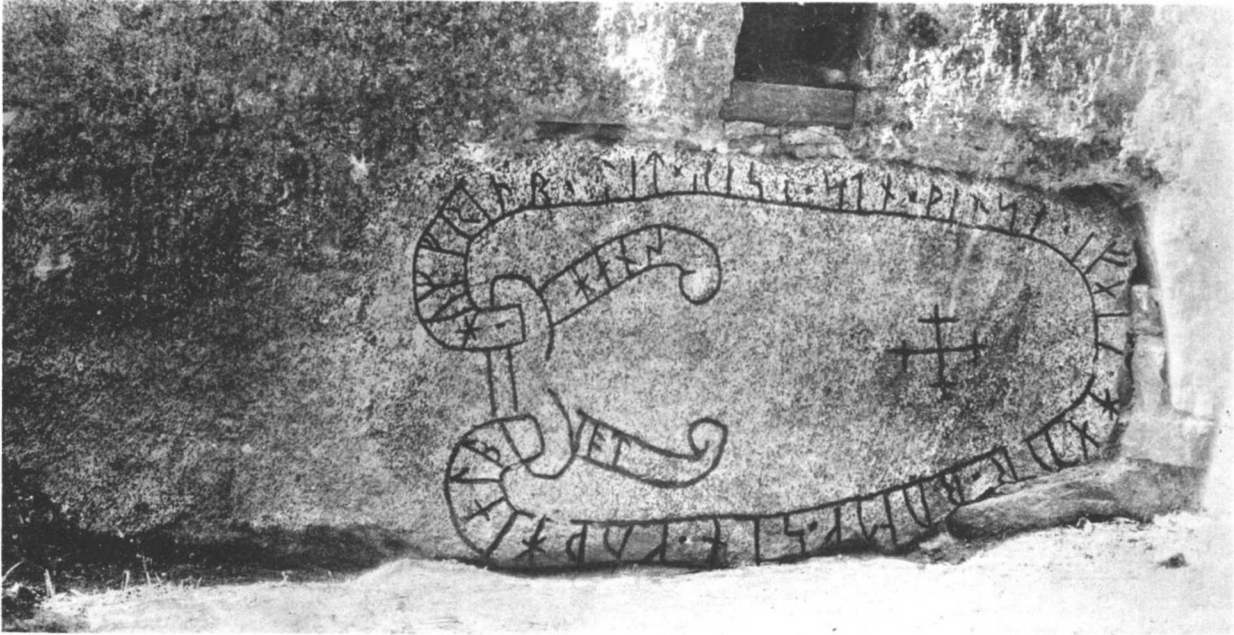
U 18. Stavsund, Ekerö sn.



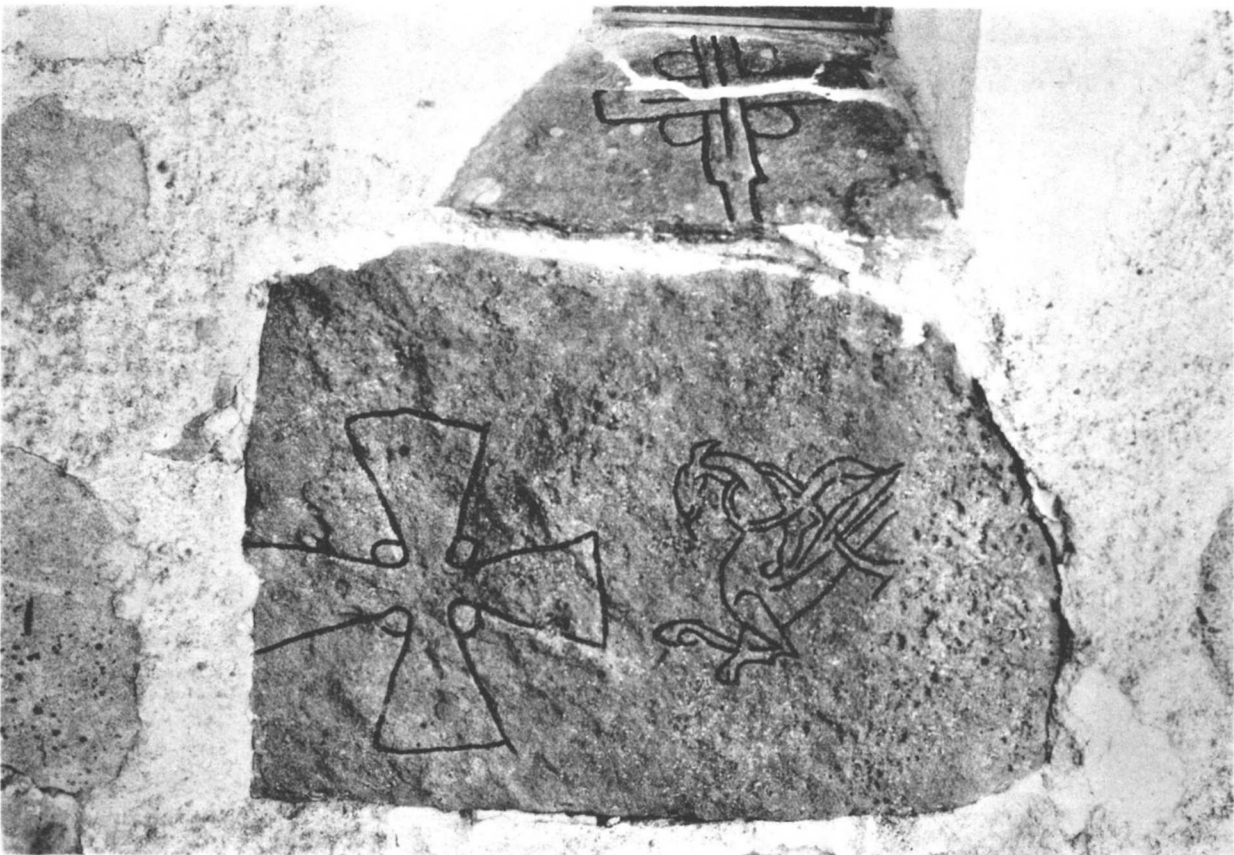
U 22. Kungsberga, Färentuna sn.



U 23. Hilleshögs kyrka.



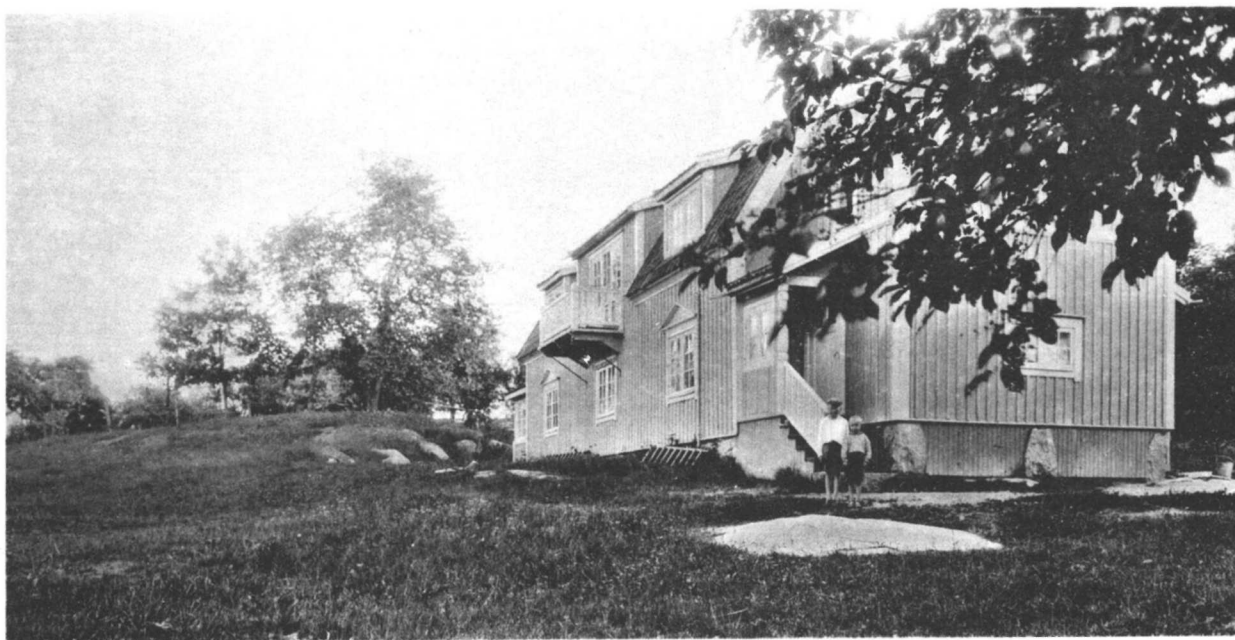
U 25. Hilleshögs kyrka.



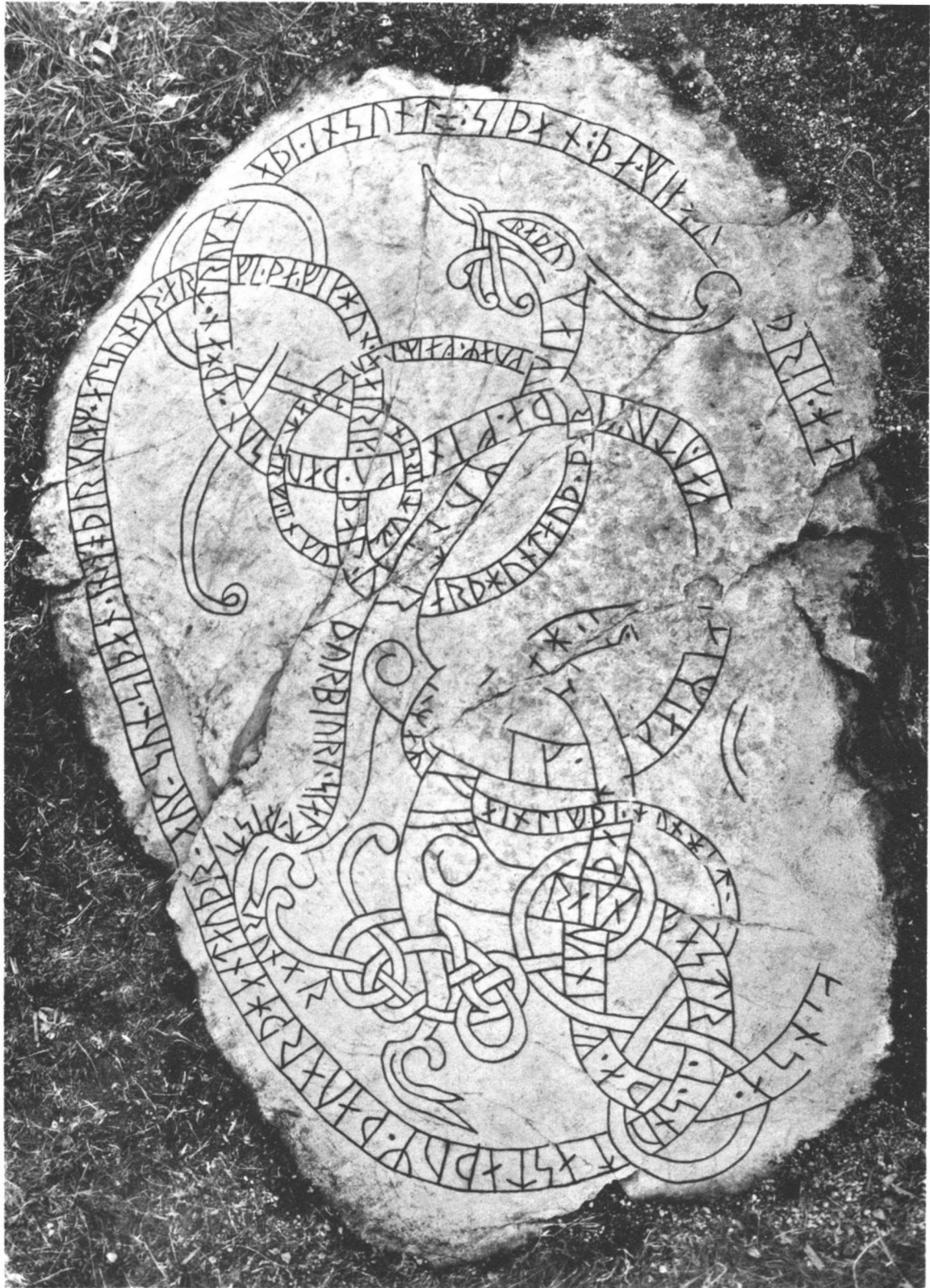
U 26 och 27. Hilleshögs kyrka.



U 24 och 28. Hilleshögs kyrka.



U 29. Hillersjö, Hilleshögs sn.



U 29. Hillersjö, Hilleshögs sn.



U 31. Väntholmen, Hilleshögs sn.



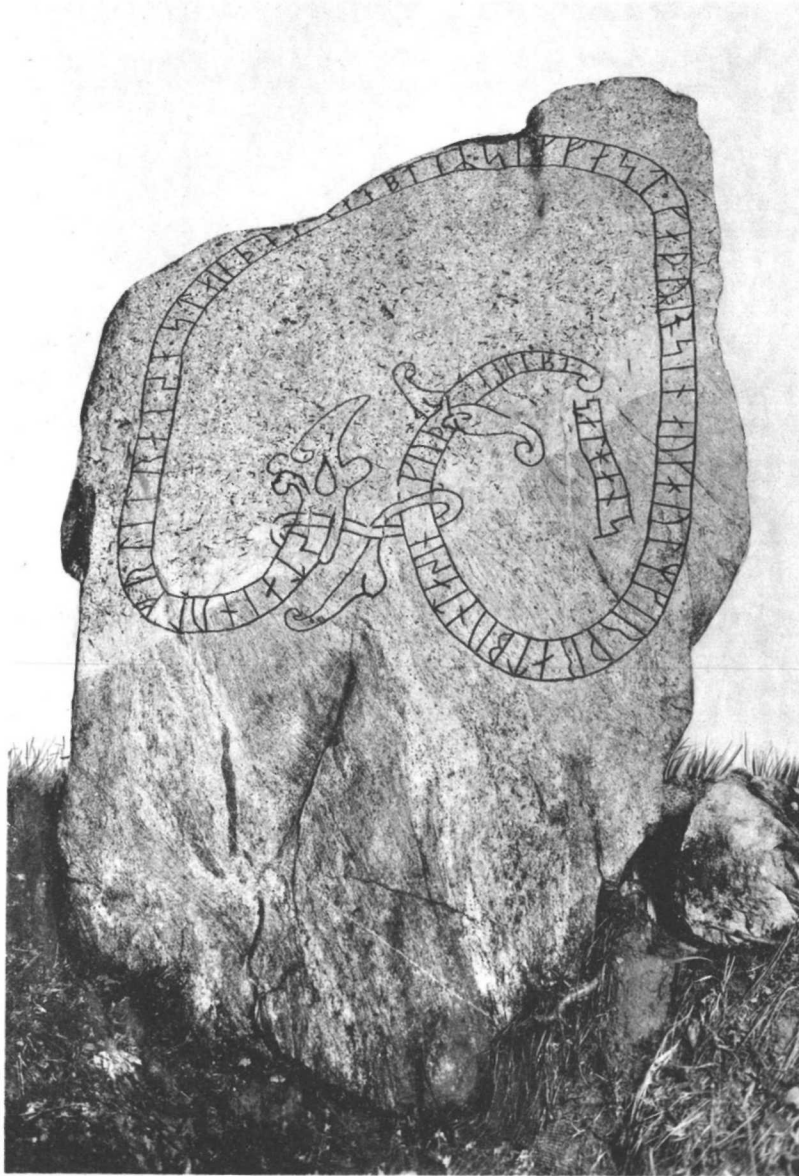
U 31. Väntholmen, Hilleshögs sn.



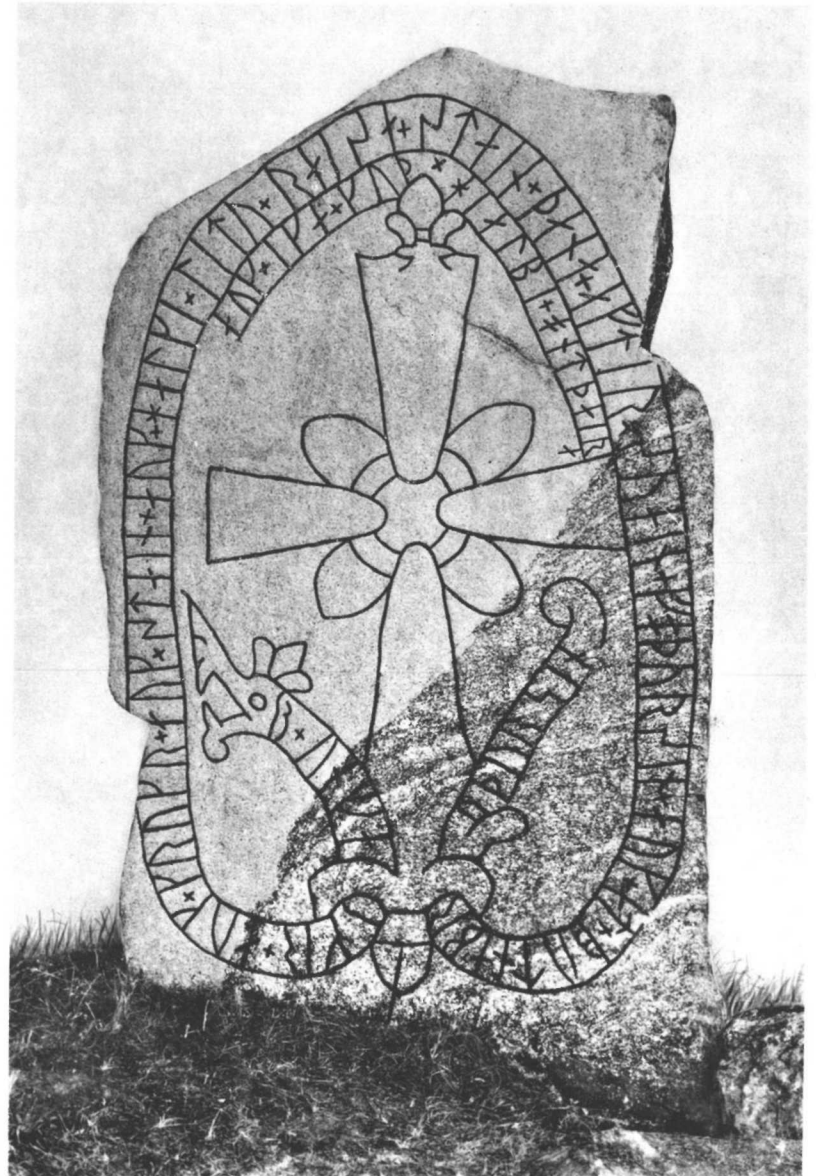
U 30. Kvarsta, Hilleshögs sn.



U 32. Stockby, Sånga sn.



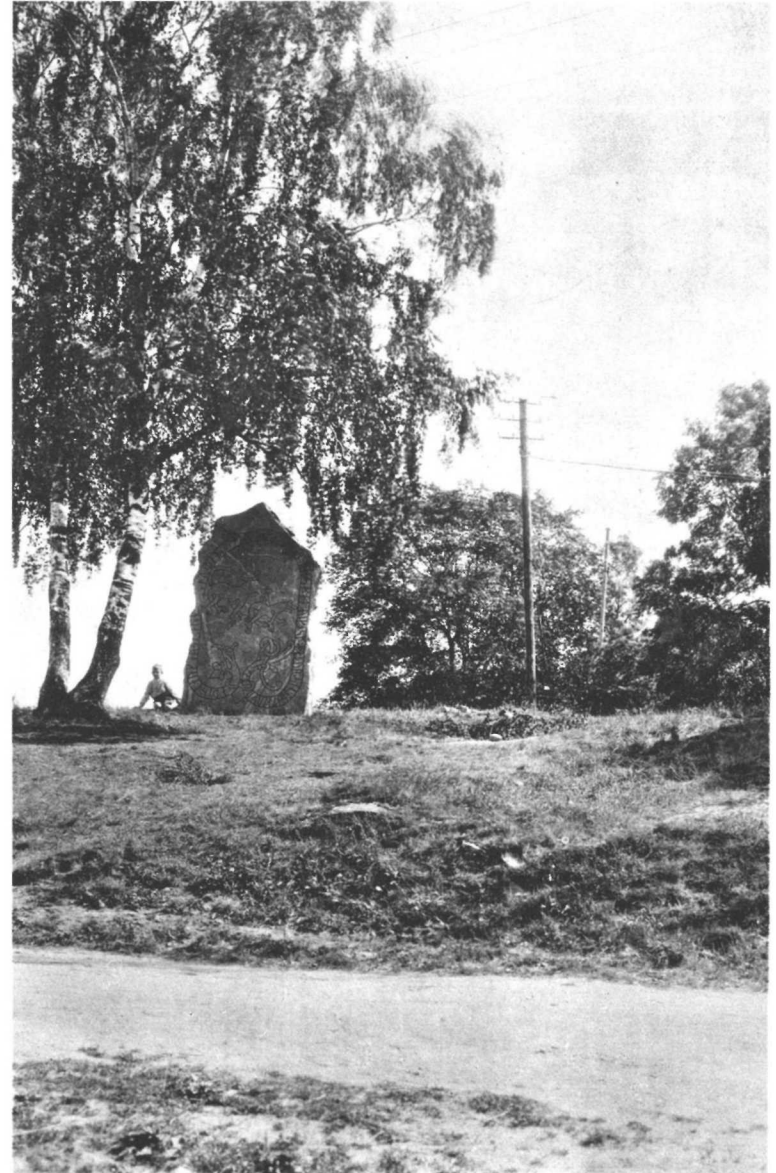
U 30. Kvarsta, Hilleshögs sn.



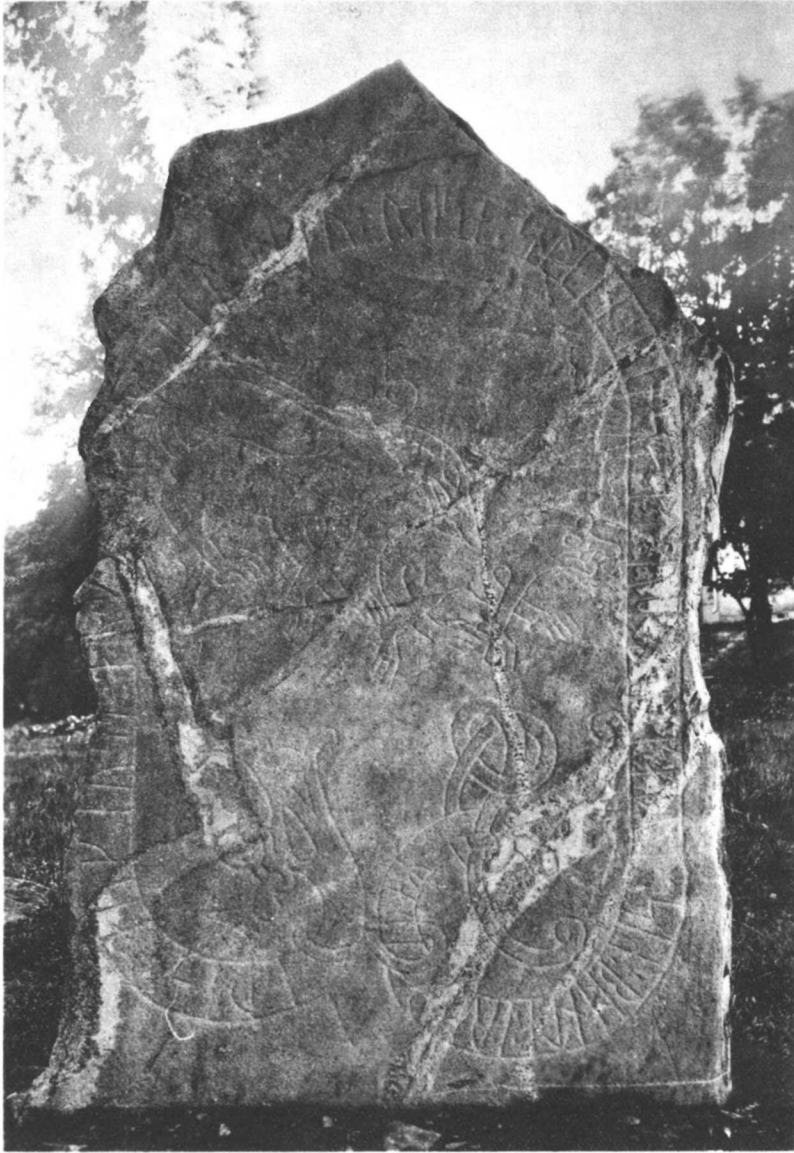
U 32. Stockby, Sångå sn.



U 34. Sundby, Sånge sn.



U 35. Svartsjö, Sånge sn.



U 35. Svartsjö, Sånge sn.



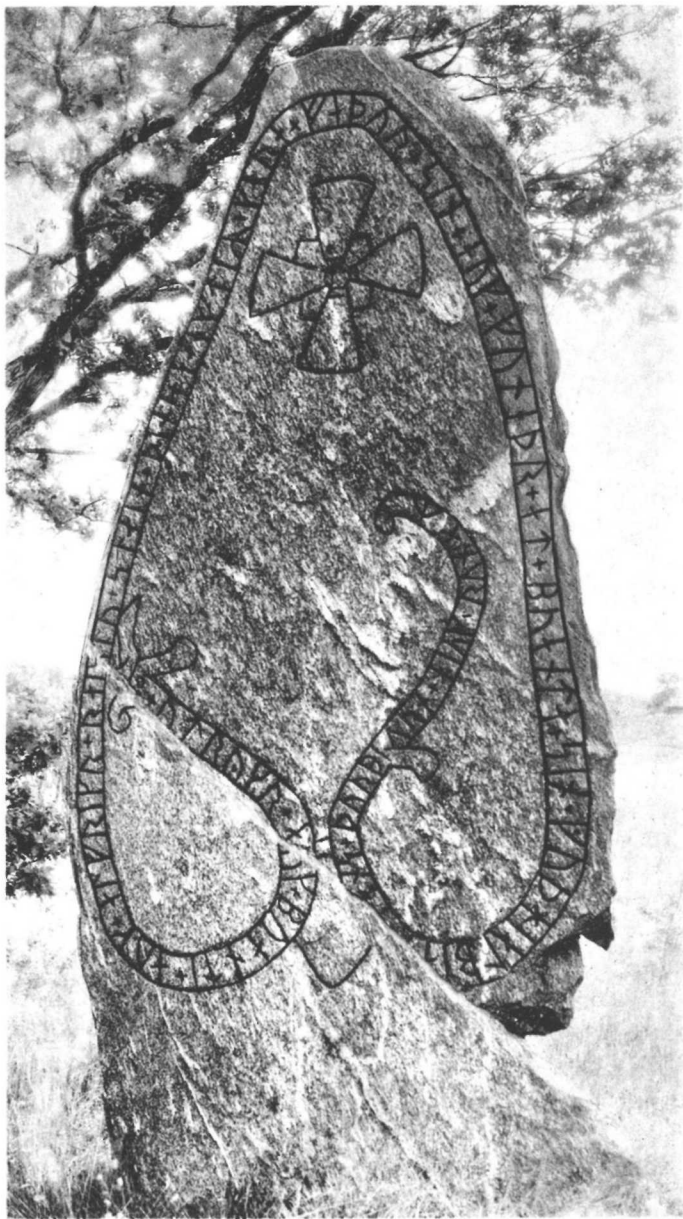
U 35. Svartsjö, Sånge sn.



U 36. Svartsjö djurgård, Sånge sn.



U 36. Svartsjö djurgård, Sånge sn.



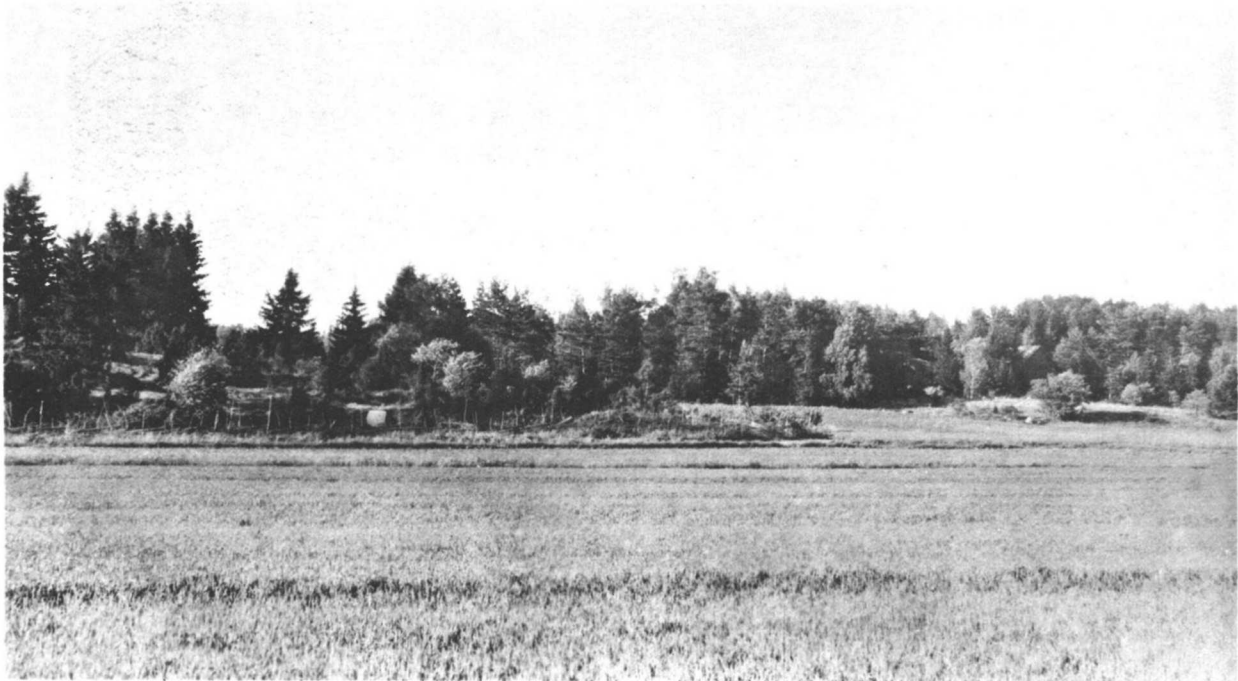
U 37. Säby, Galgbacken, Sångå sn.



U 38. Säby, Galgbacken, Sångå sn.



U 37 och 38. Säby, Galgbacken, Sönga sn.



U 41. Kumla, Skå sn.



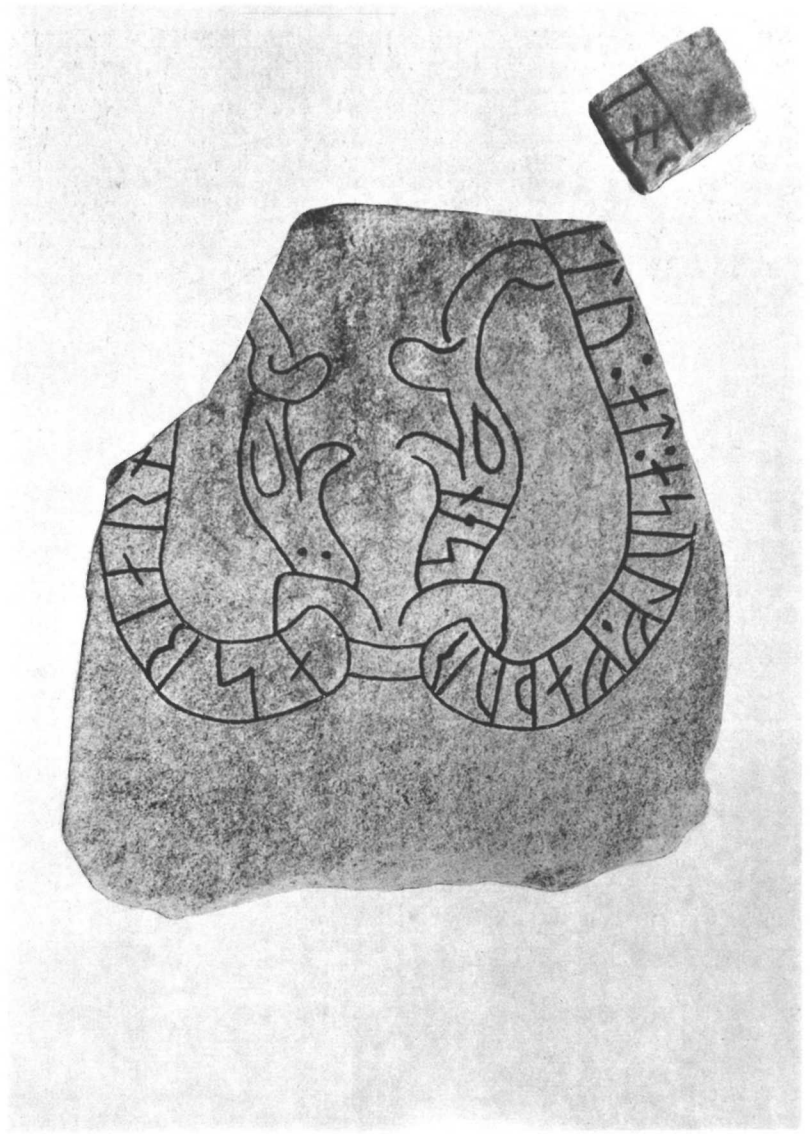
U 41. Kumla, Skå sn.



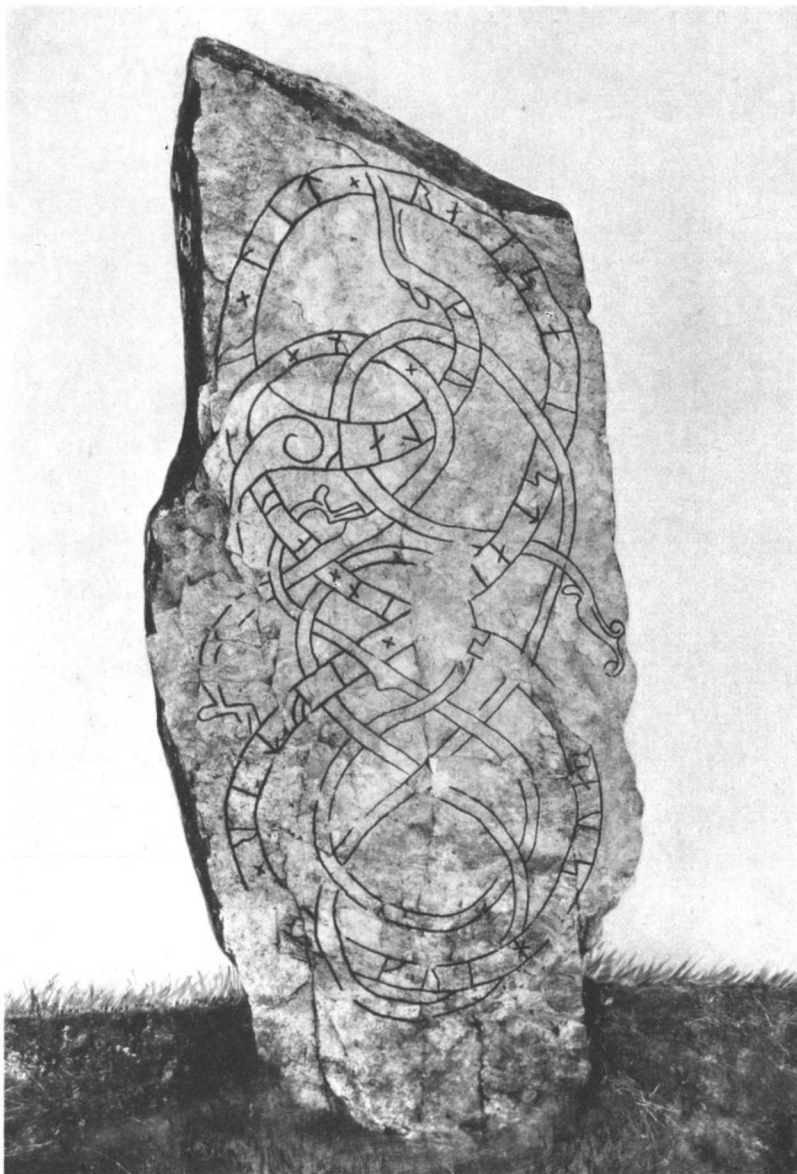
U 41. Kumla, Skå sn.



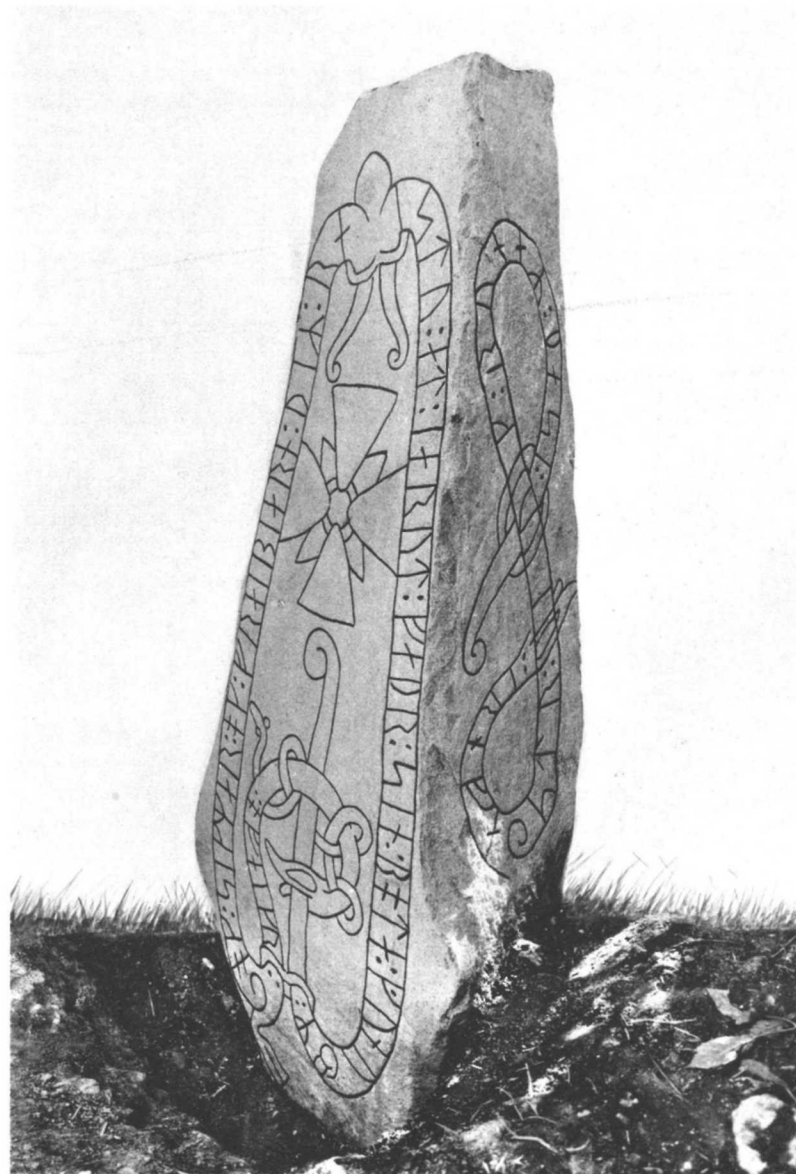
U 40. Eneby, Skå sn.



U 40. Eneby, Skå sn.



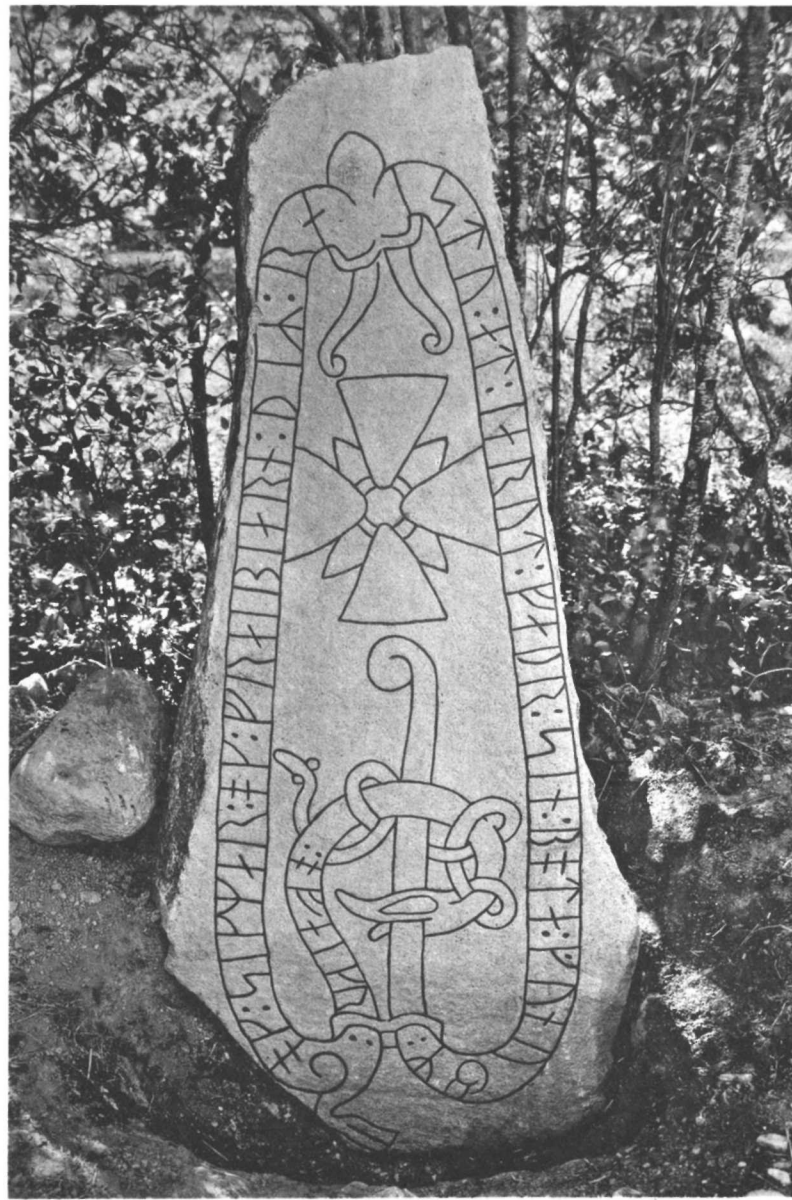
U 42. Troxhammar, Skå sn.



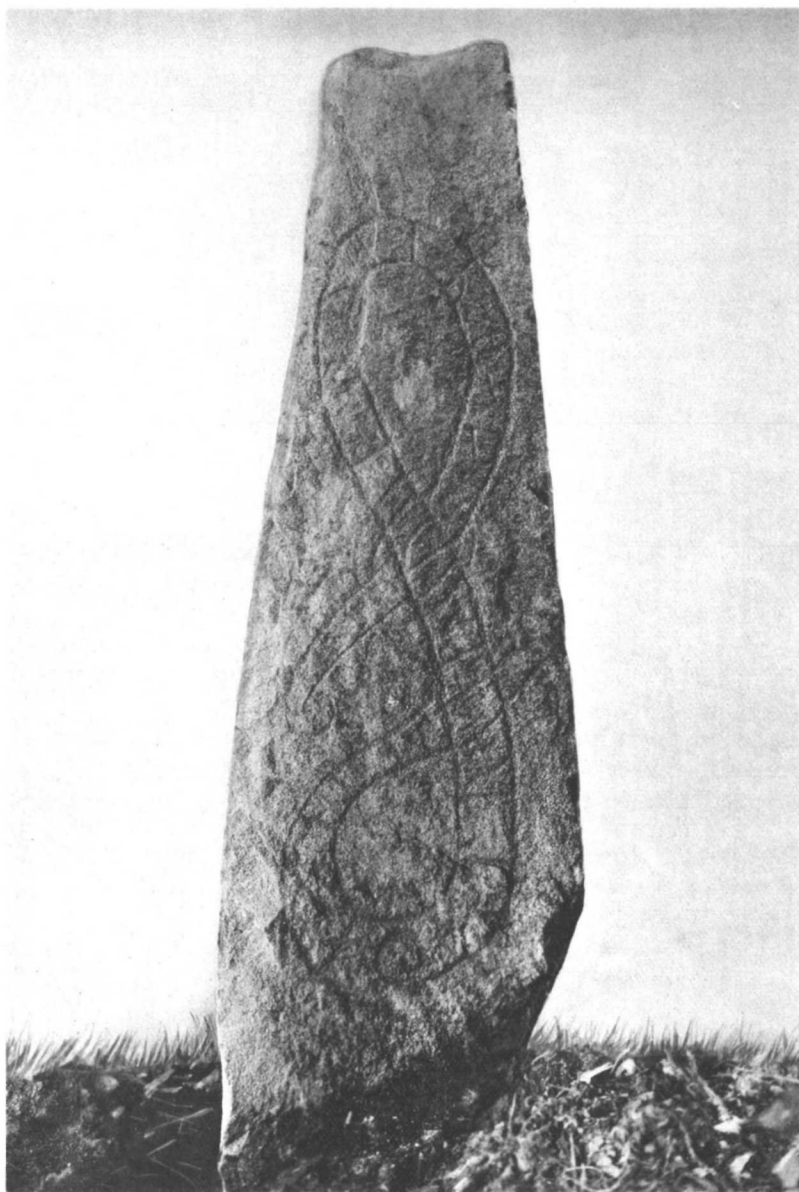
U 43. Törnby, Skå sn.



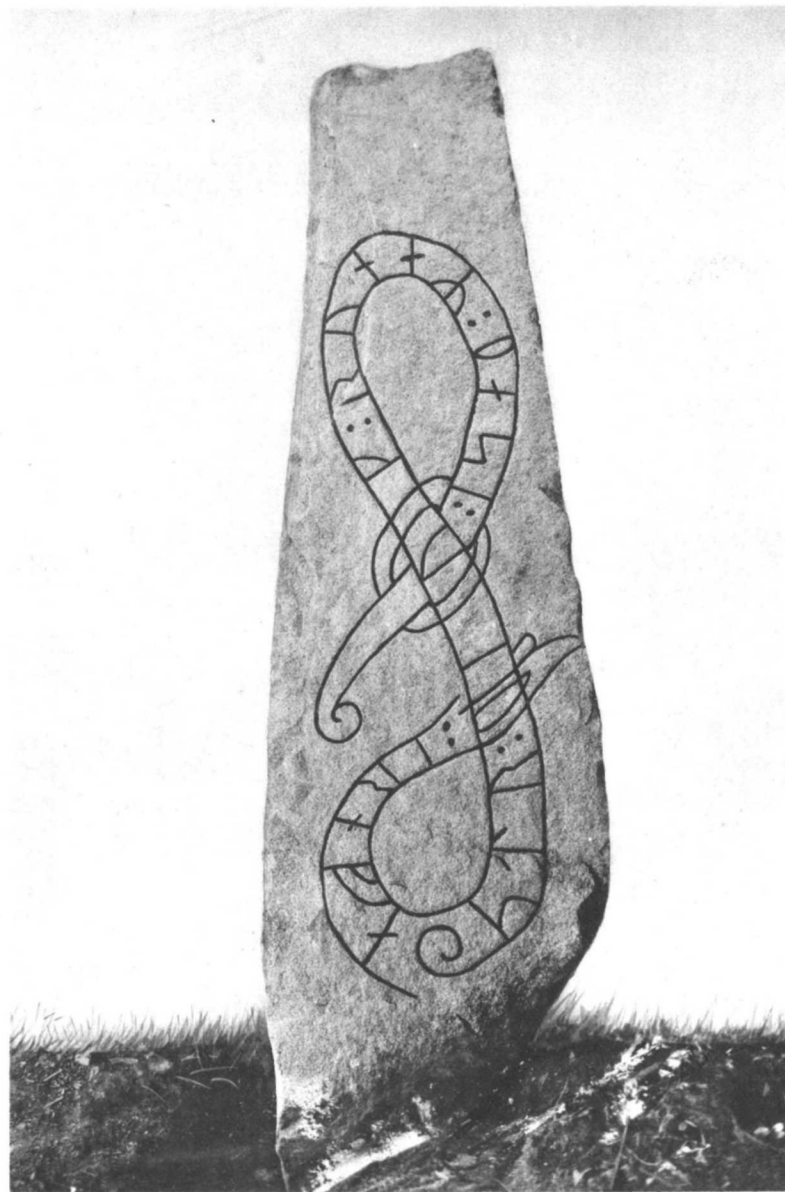
U 43. Törnby, Skå sn.



U 43. Törnby, Skå sn.



U 43. Törnby, Skå sn.



U 43. Törnby, Skå sn.



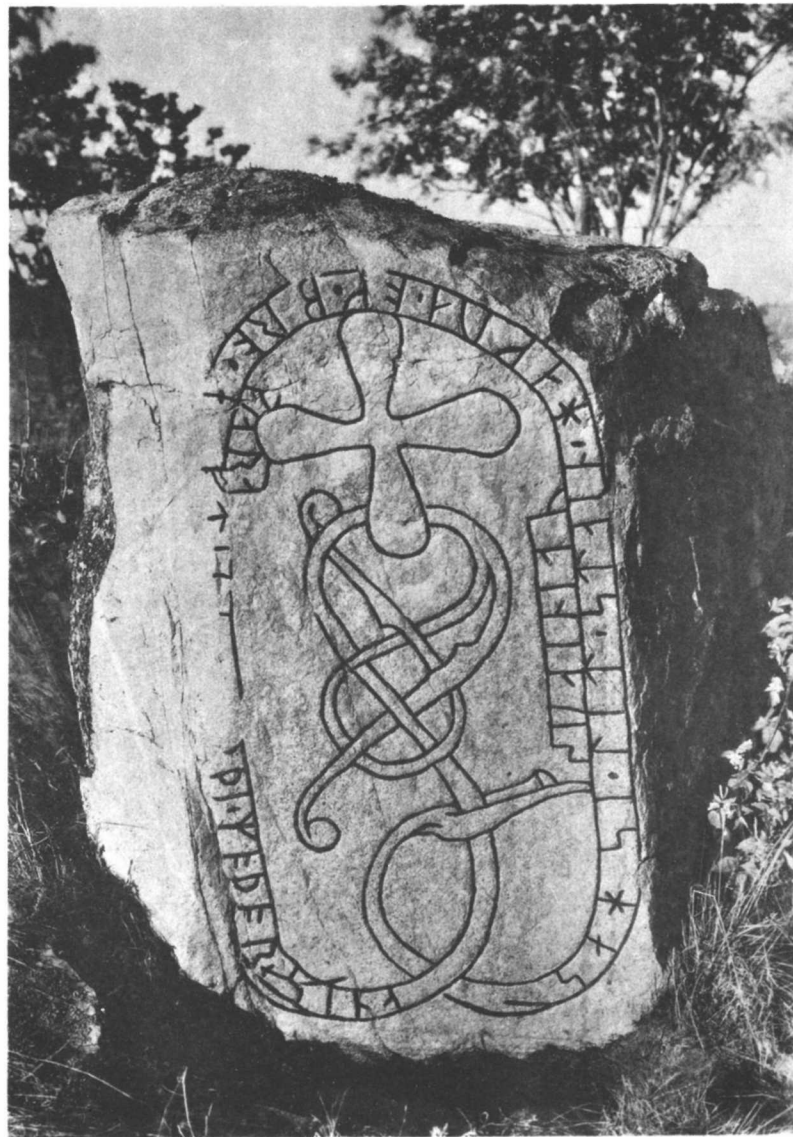
U 43. Törnby, Skå sn.



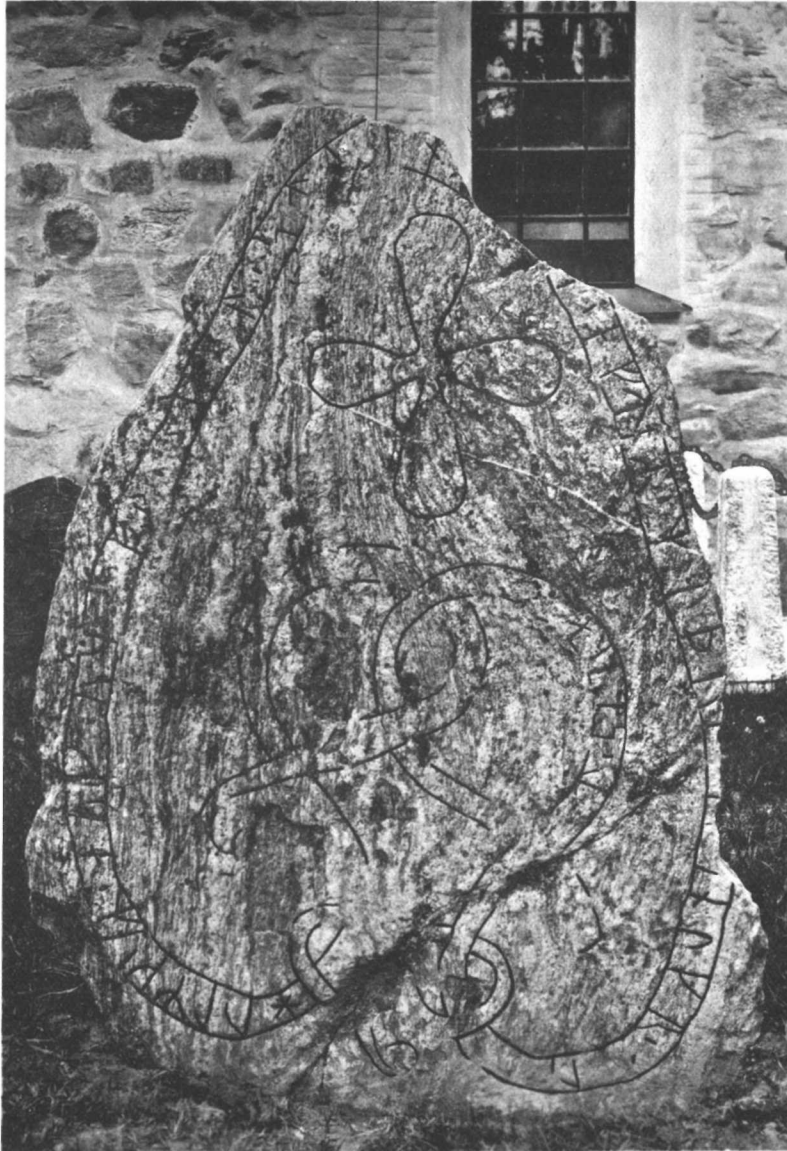
U 45. Törnby, Skå sn.



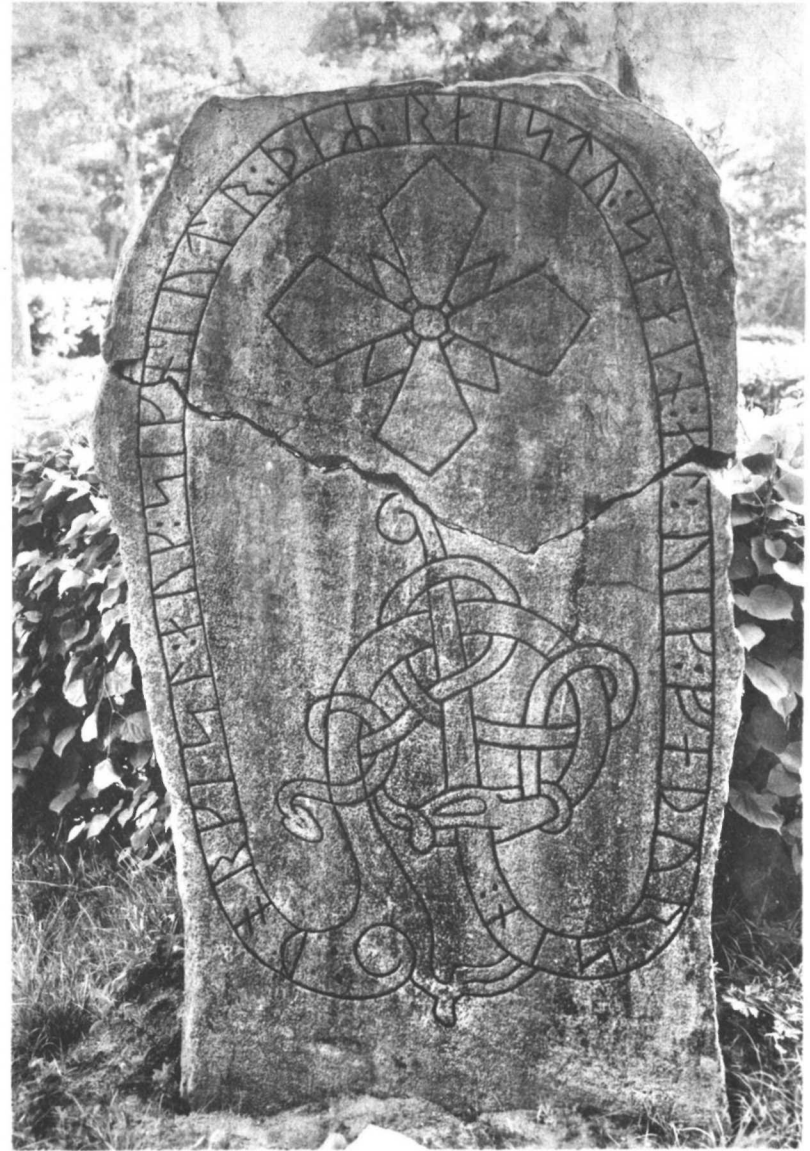
U 45. Törnby, Skå sn.



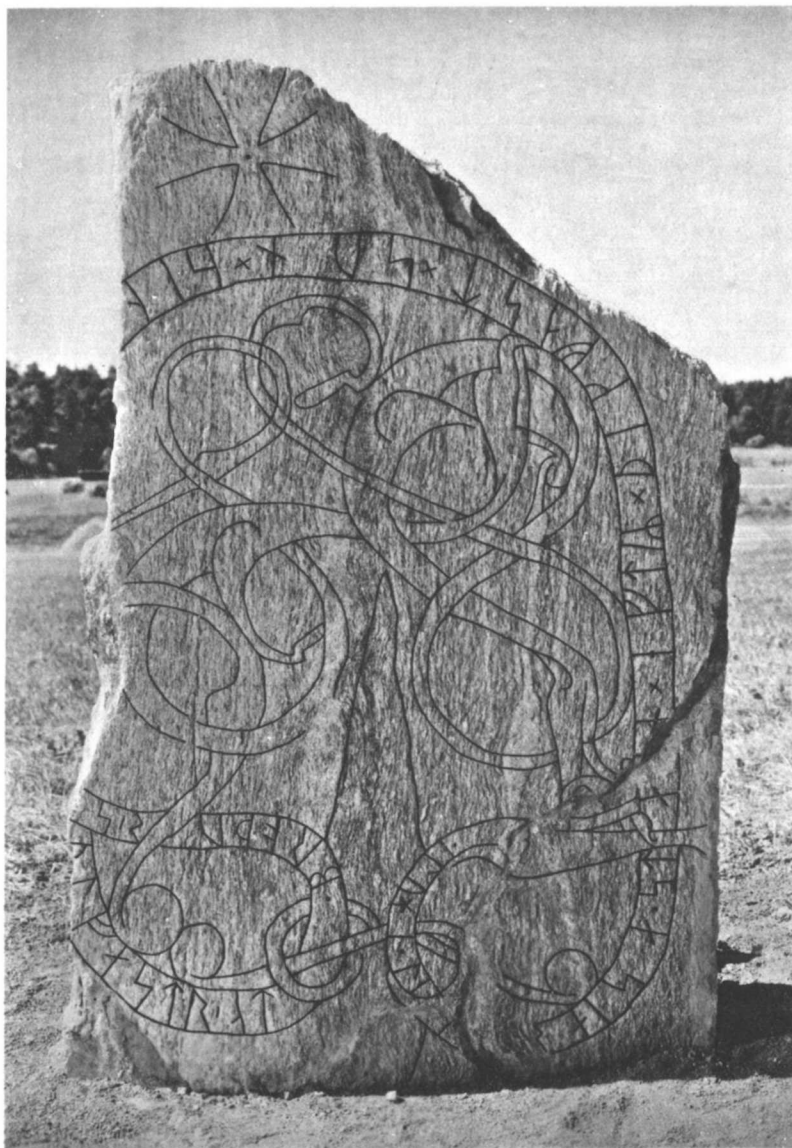
U 45. Törnby, Skå sn.



U 46. Lovö kyrka.



U 47. Lovö kyrka.
Nu i Drottningholms park.



U 48. Lovö kyrka.



U 52. Edeby, Lovö sn.



U 49. Lovö kyrka.



U 49. Lovö kyrka.



U 50. Lovö kyrka.



U 50. Lovö kyrka.



U 52. Edeby, Lovö sn.



U 58 och 59. Riksby, Bromma, Stockholm.



U 53. Kåkbrinken, Stockholm.



U 53. Kåkbrinken, Stockholm.



U 56. Glia, Bromma, Stockholm.



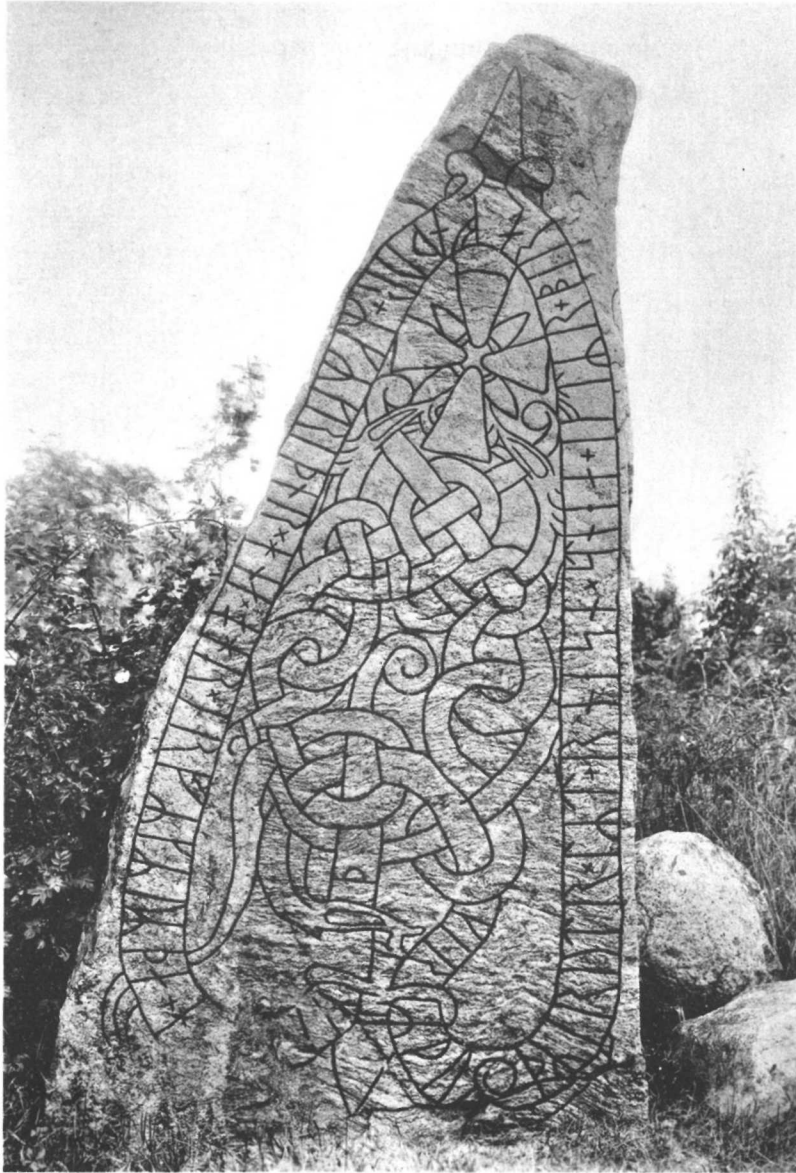
U 56. Glia, Bromma, Stockholm.



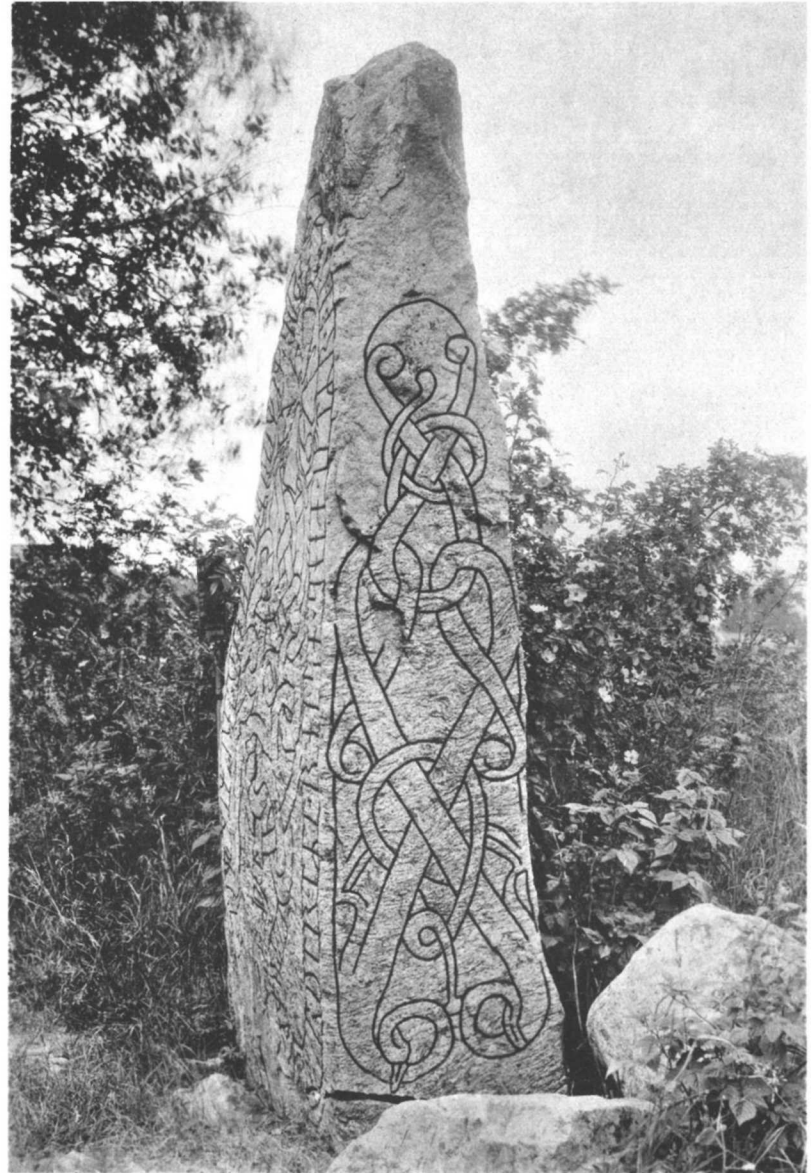
U 58. Riksby, Bromma, Stockholm.



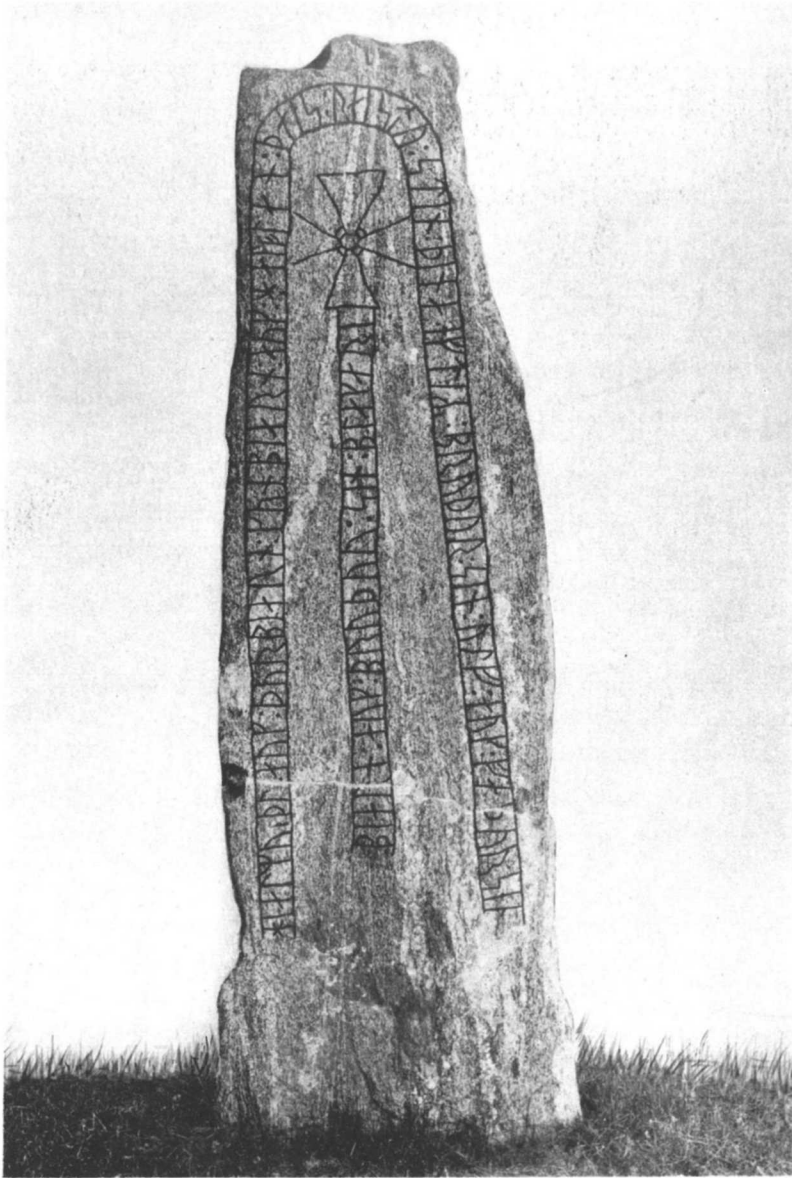
U 59. Riksby, Bromma, Stockholm.



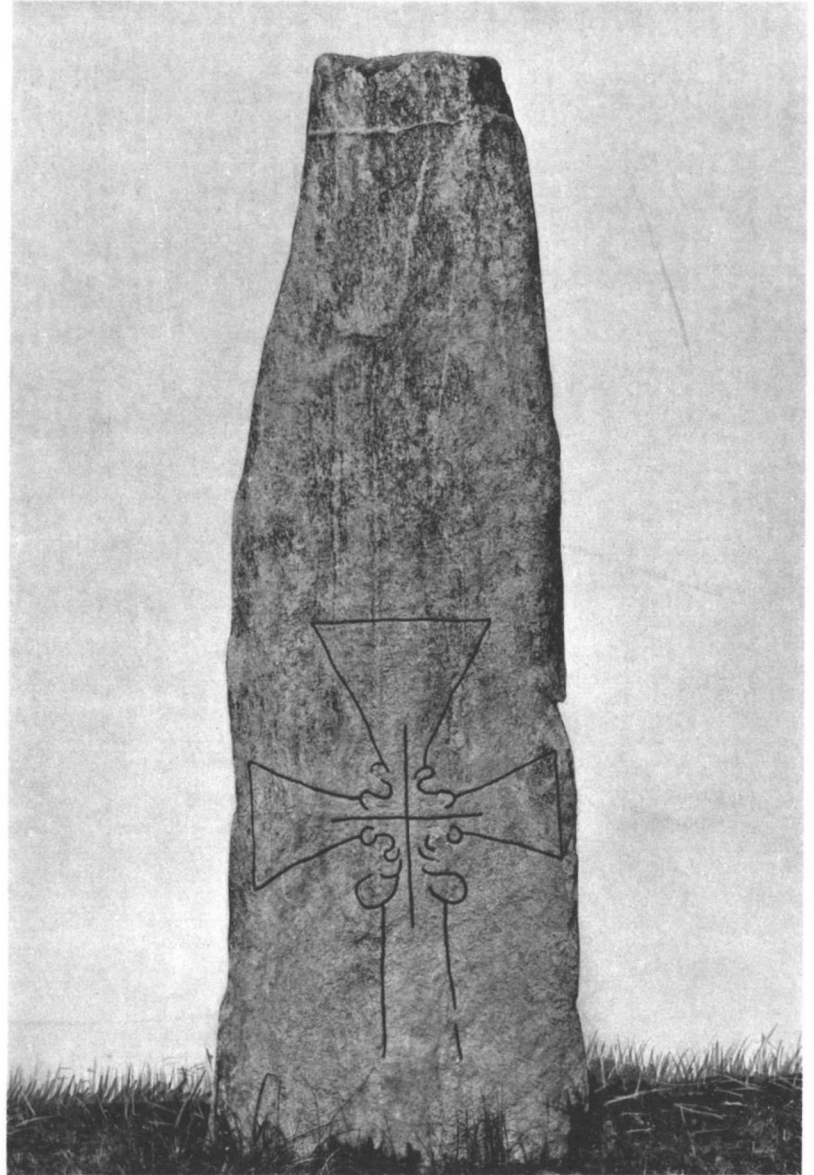
U 60. Ängby, Bromma, Stockholm.



U 60. Ängby, Bromma, Stockholm.



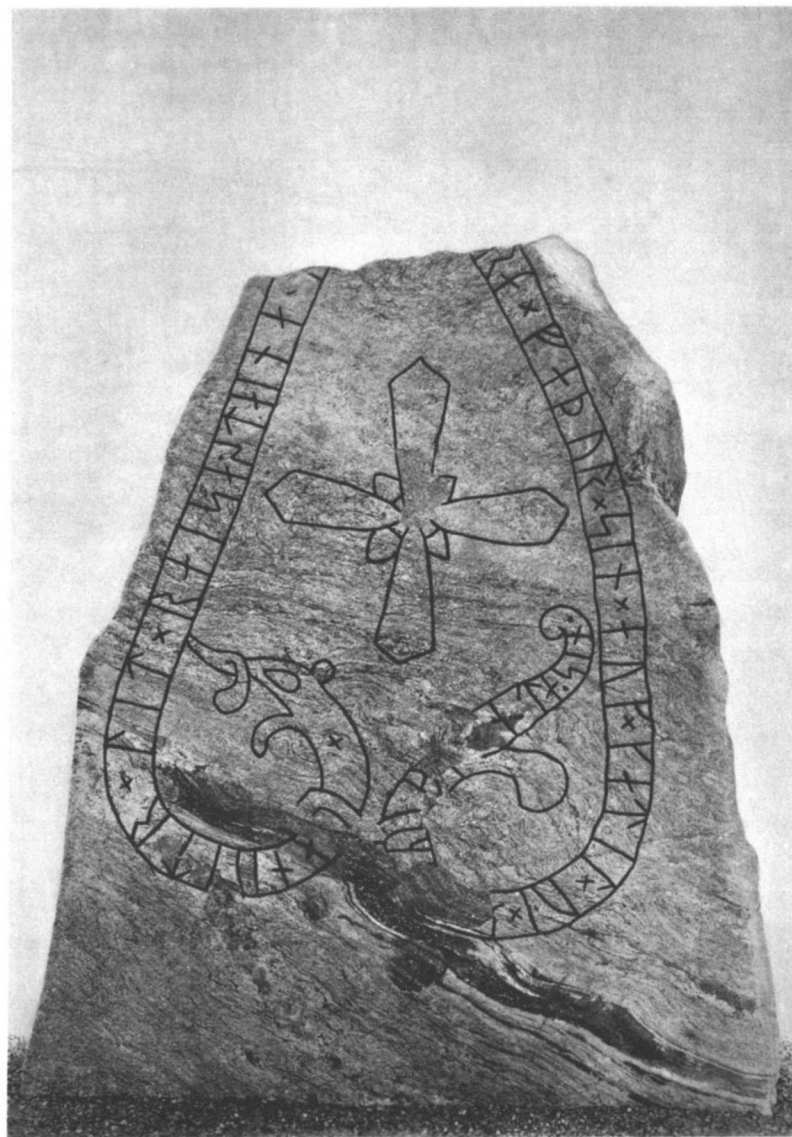
U 61. Spånga kyrka.



U 61. Spånga kyrka.



U 62. Spånga kyrka.



U 62. Spånga kyrka.



U 65. Spånga kyrka.
Foto E. Brate 1902.



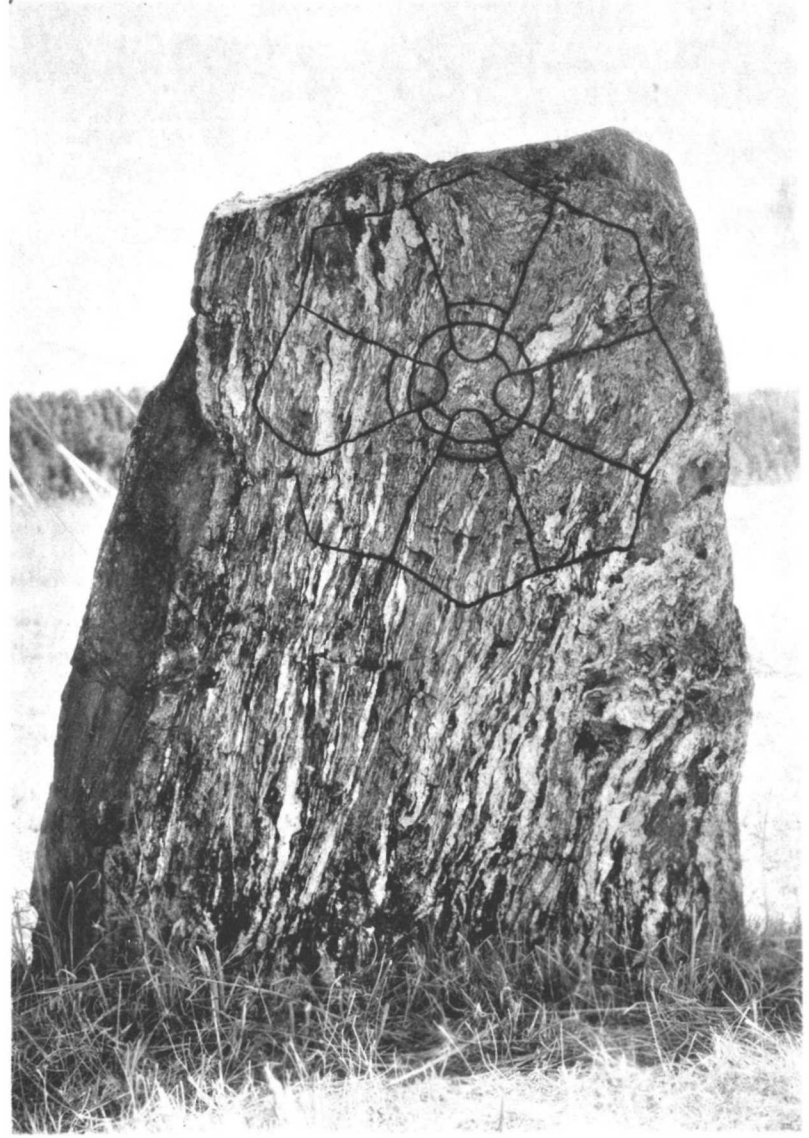
U 67. Spånga kyrka.



U 63, 66 och 68. Spånga kyrka.



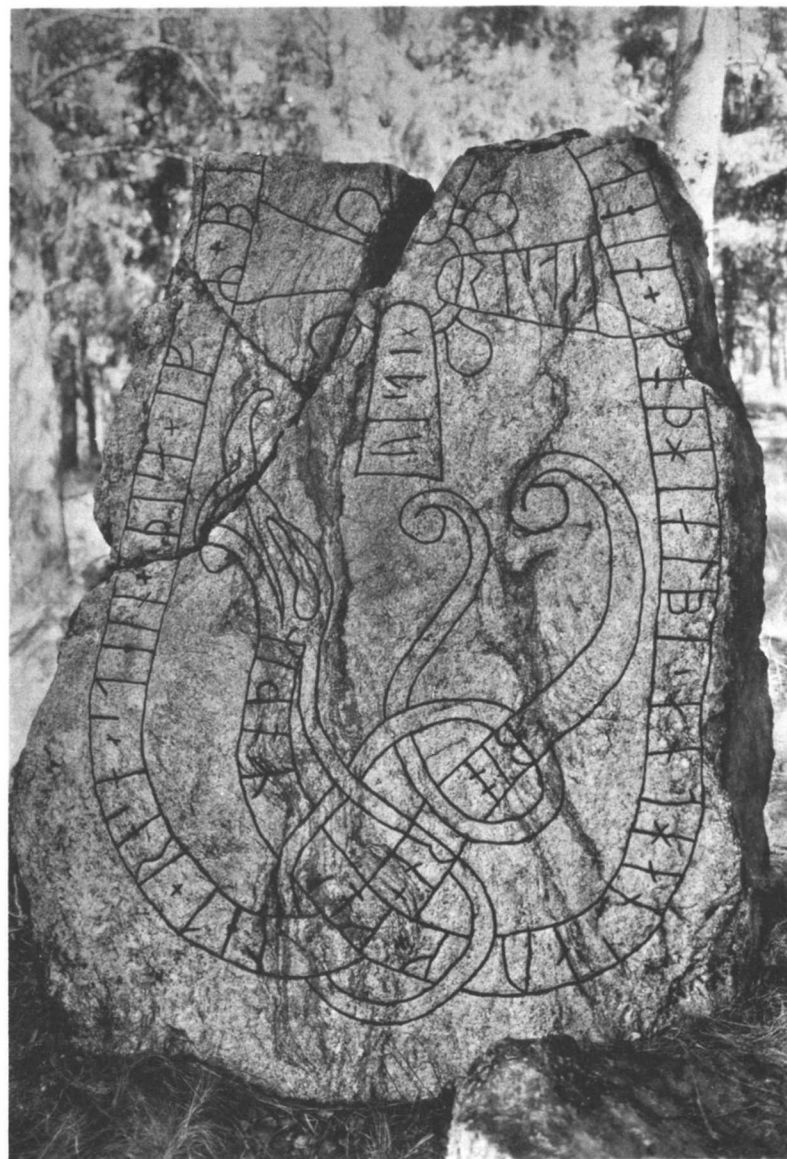
U 69. Eggeby, Spånga sn.



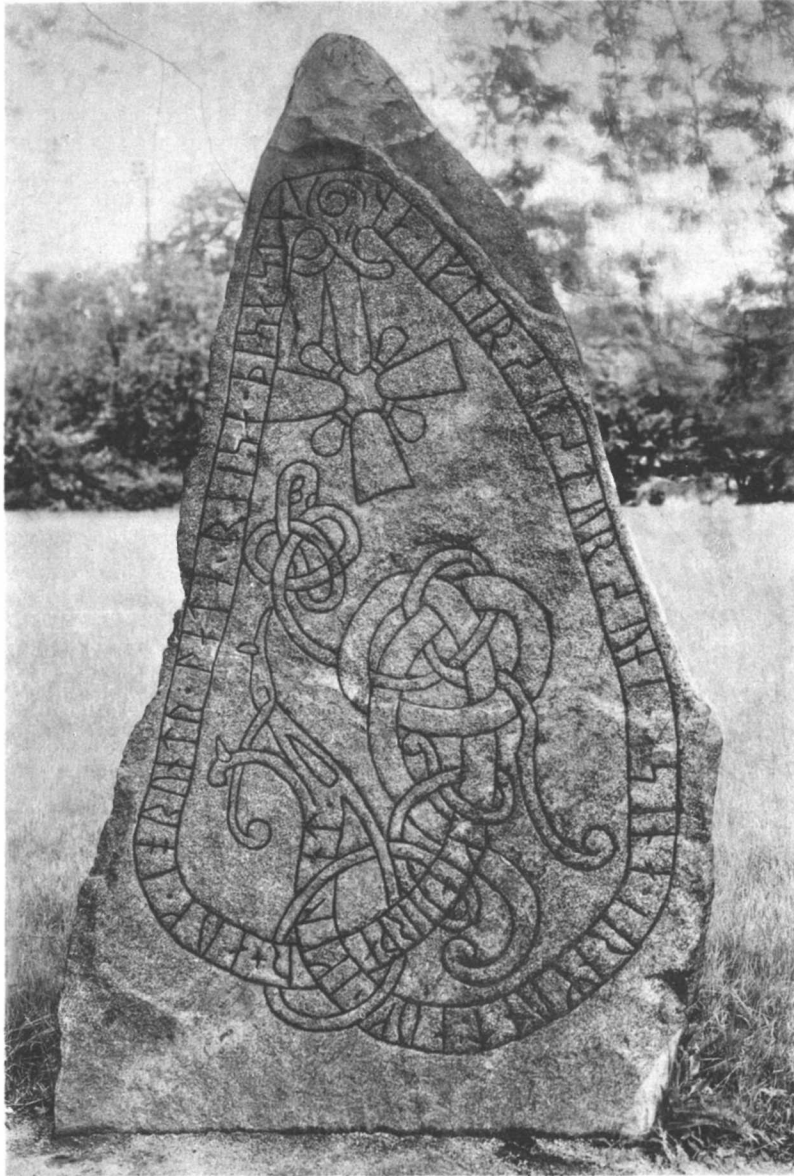
U 69. Eggeby, Spånga sn.



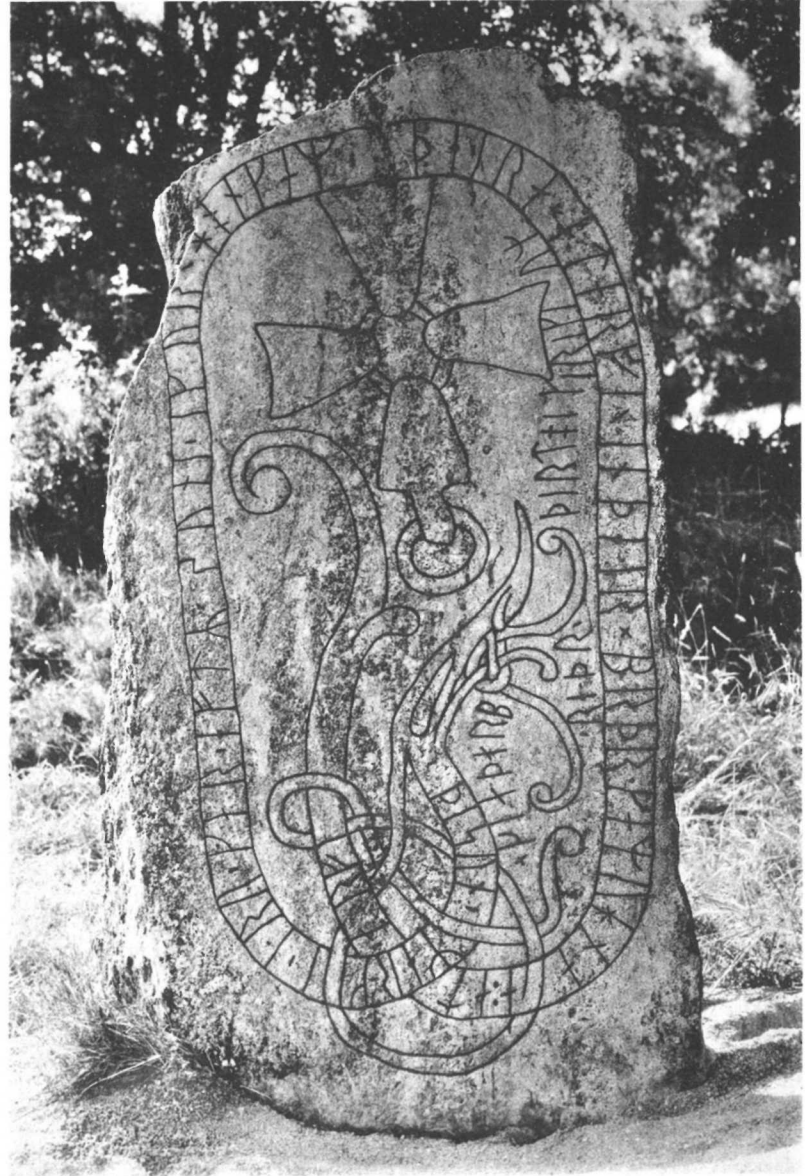
U 64. Spånga kyrka.



U 74. Husby, Spånga sn.



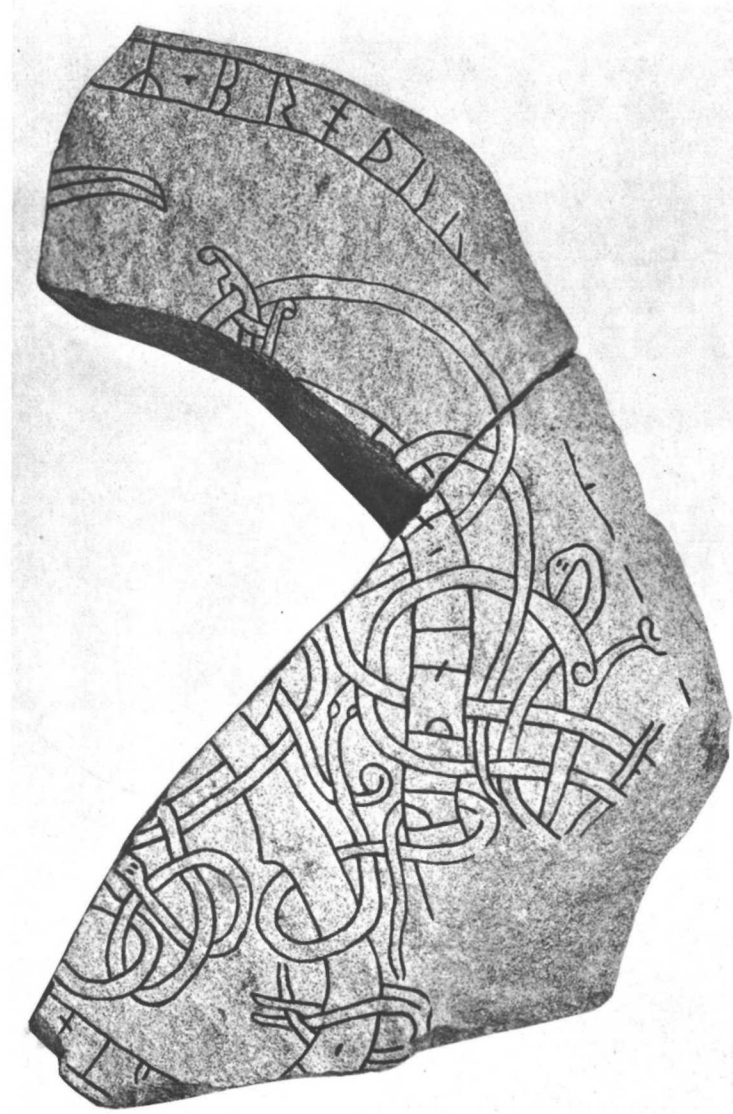
U 72. Hansta, Spånga sn.
Nu på Skansen, Stockholm.



U 73. Hansta, Spånga sn.



U 75. Kista, Spånga sn.



U 76. Kista, Spånga sn.
Nu i Statens Historiska Museum.



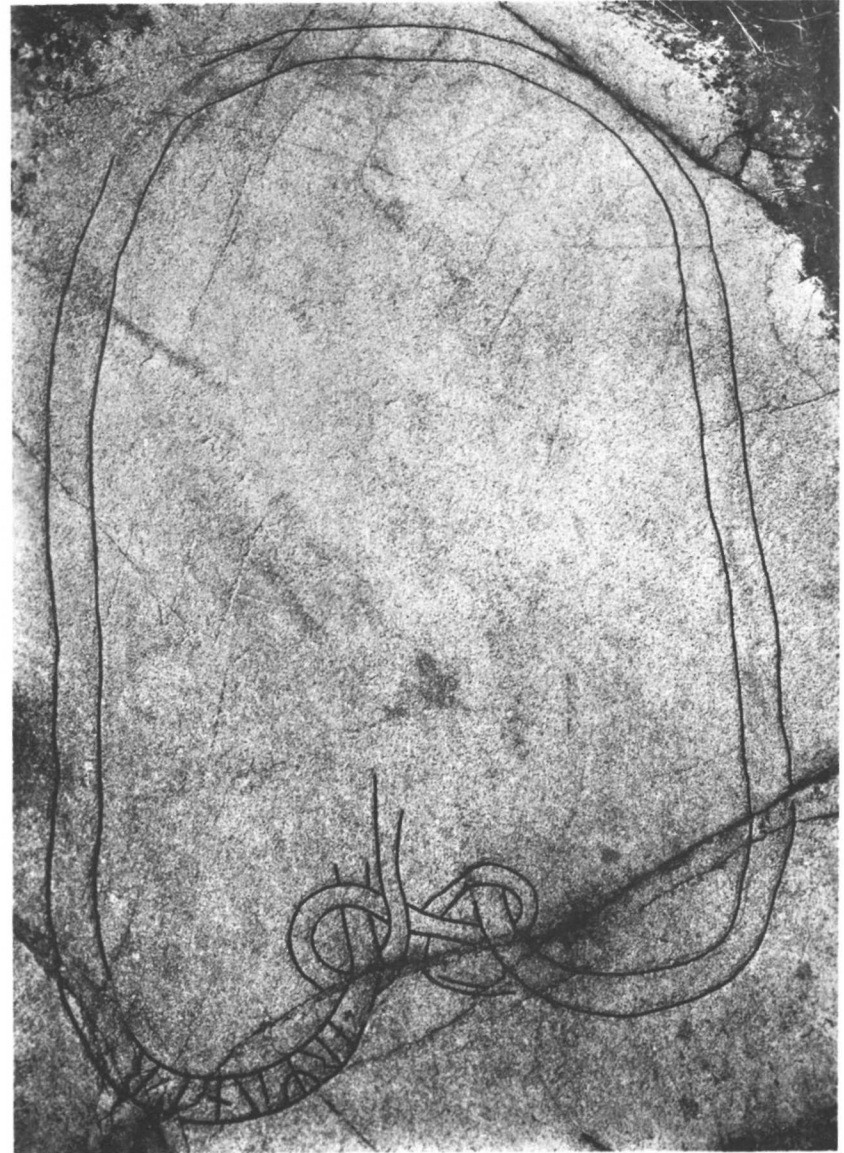
U 77. Råsta, Spånga sn.



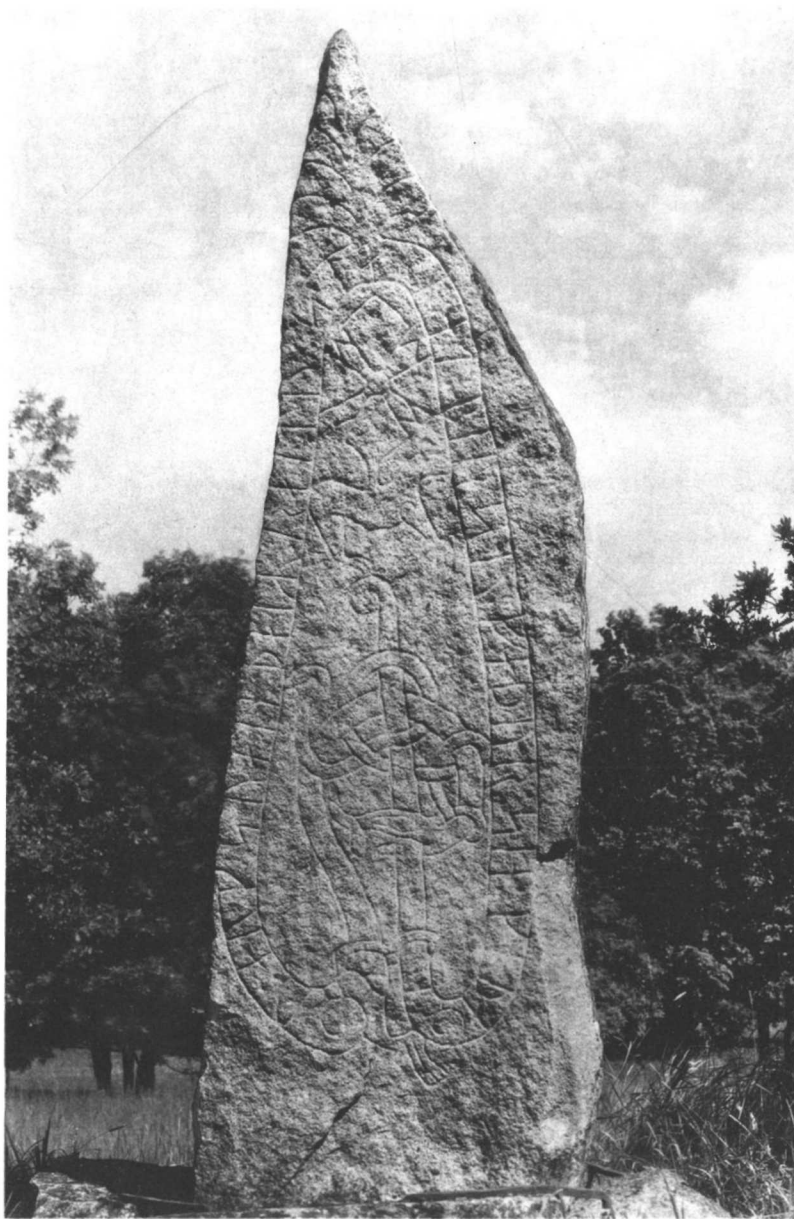
U 77. Råsta, Spånga sn.



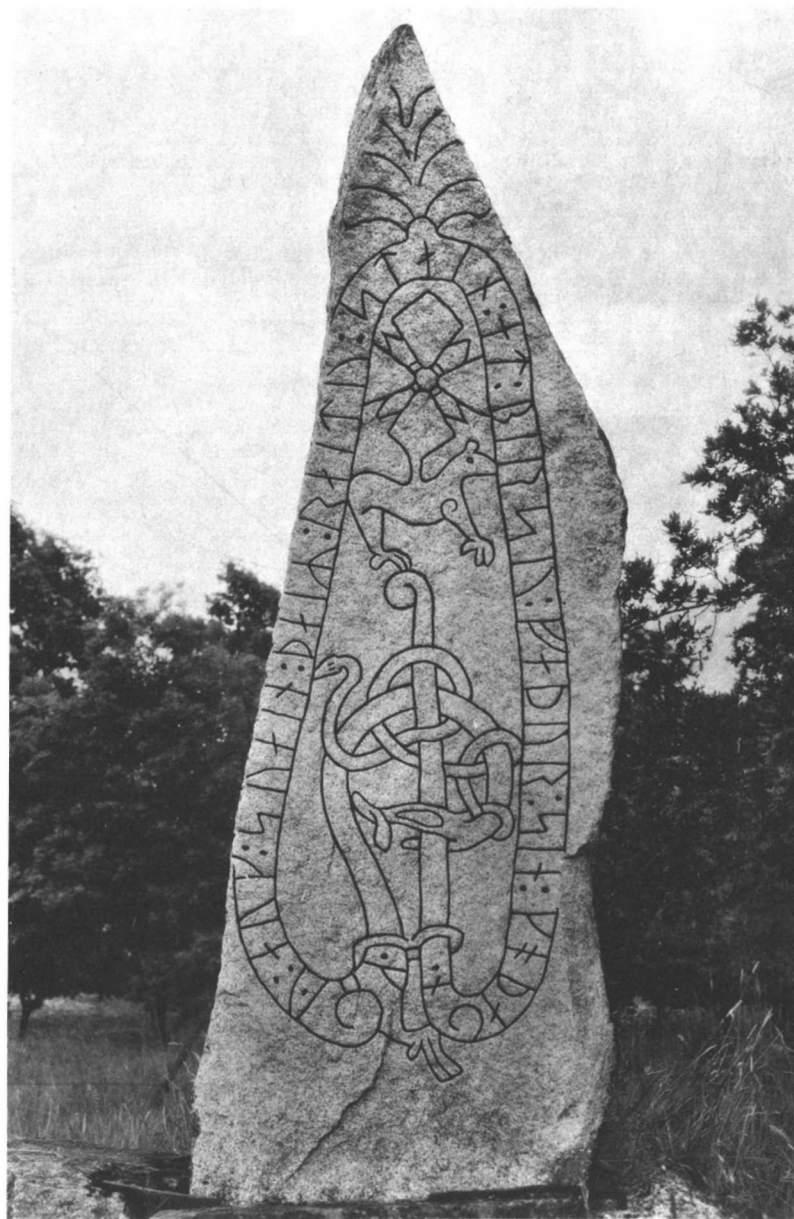
U 78. Råsta, Spånga sn.
Nu i Spånga kyrka.



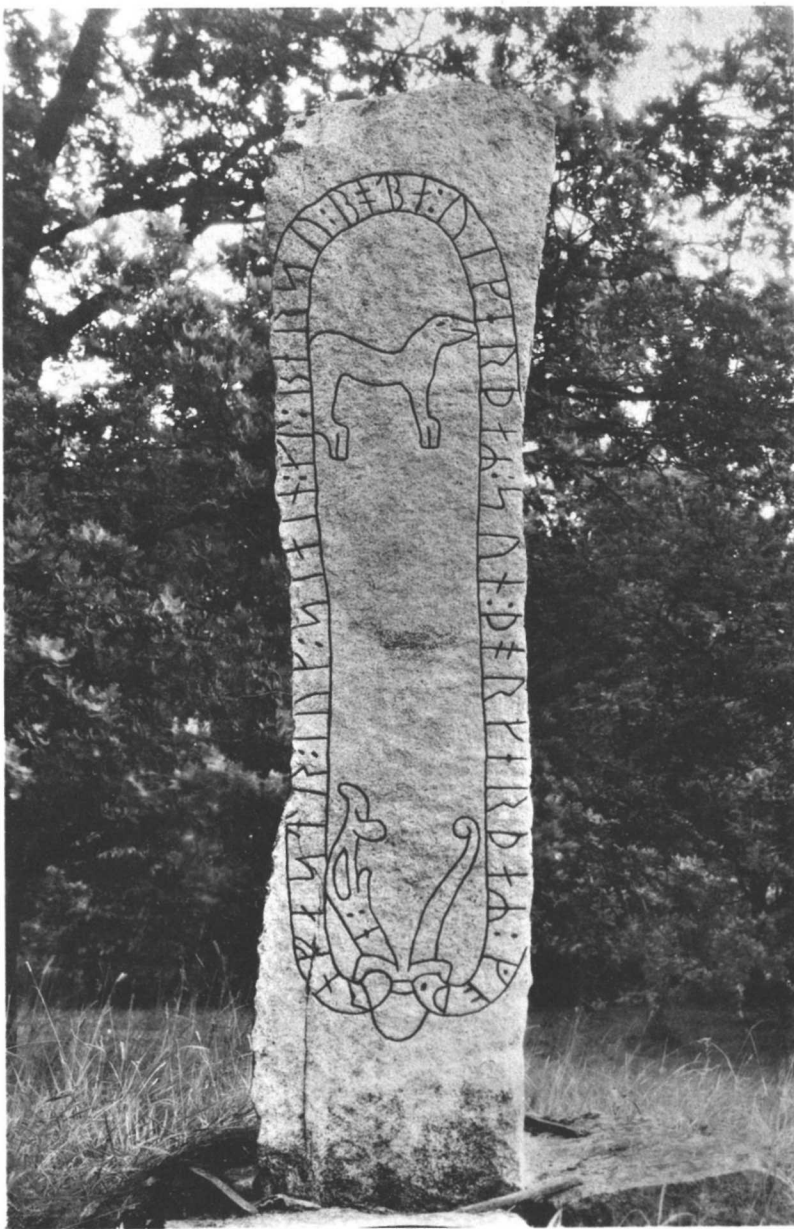
U 81. Sundby, Spånga sn.



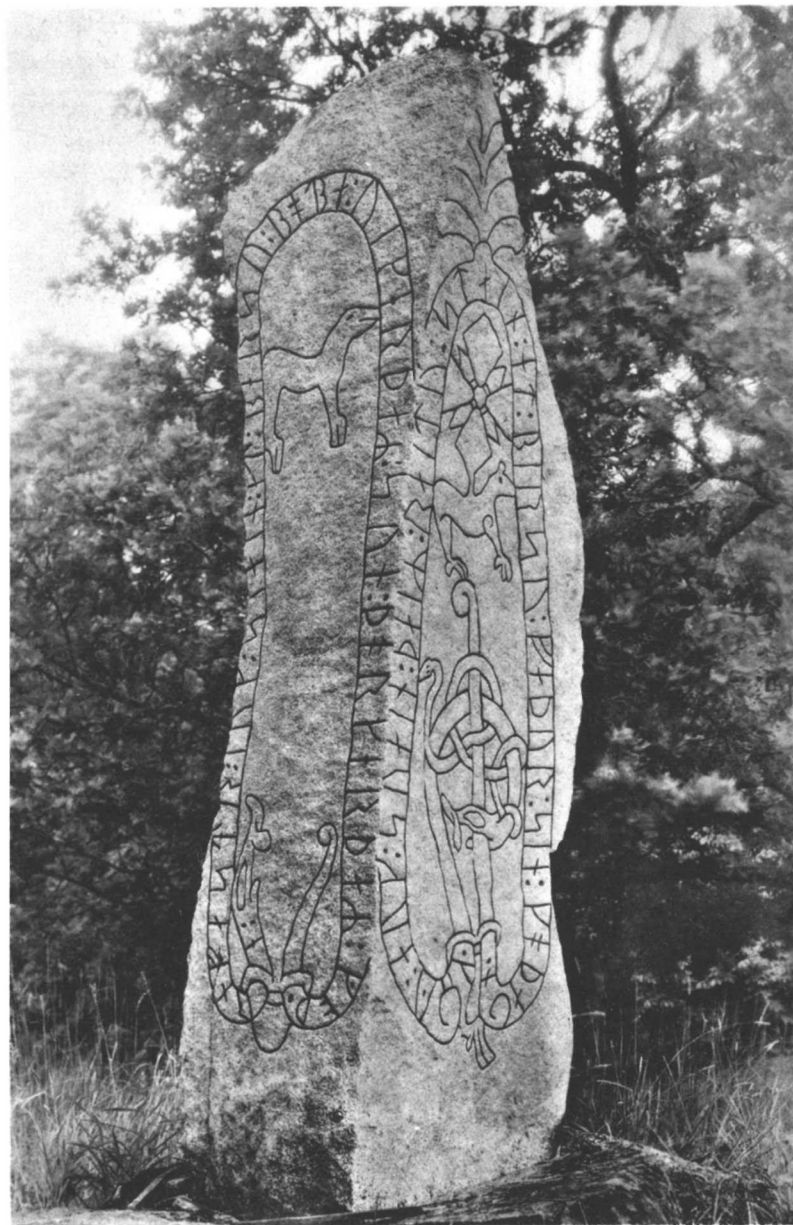
U 79. Skesta, Spånga sn.



U 79. Skesta, Spånga sn.
Nu vid Hüsselby.



U 79. Skesta, Spånga sn.



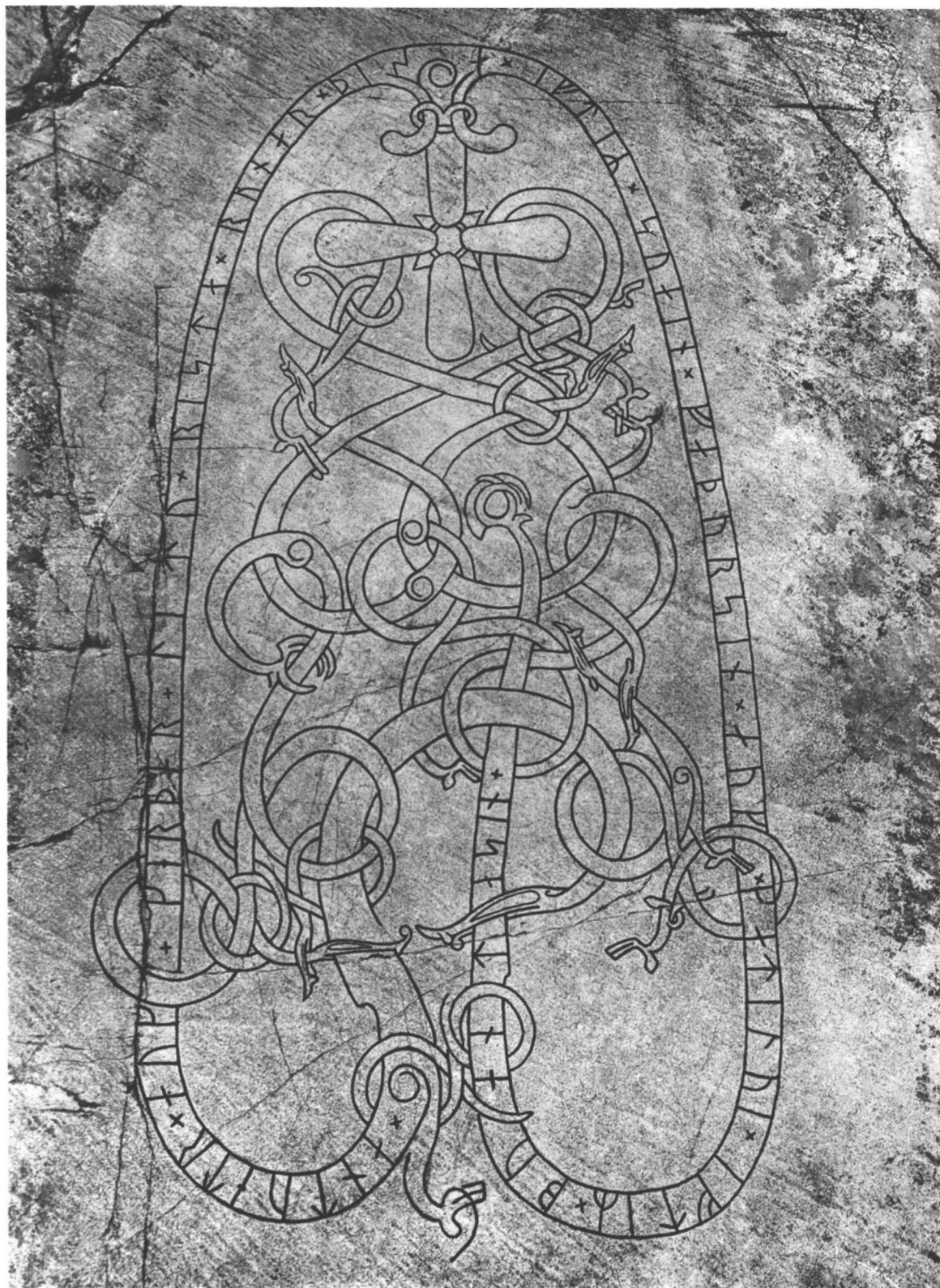
U 79. Skesta, Spånga sn.
Nu vid Hüsselby.



U 79. Skesta, Spånga sn.
Nå vid Hässelby.



U 80 och 81. Sundby, Spånga sn.



U 80. Sundby, Spånga sn.



U 84. Egglunda, Järfälla sn.



U 85. Lövsta, Järfälla sn.



U 86. Skylsta, Järfälla sn.



U 88. Skälby, Järfälla sn.



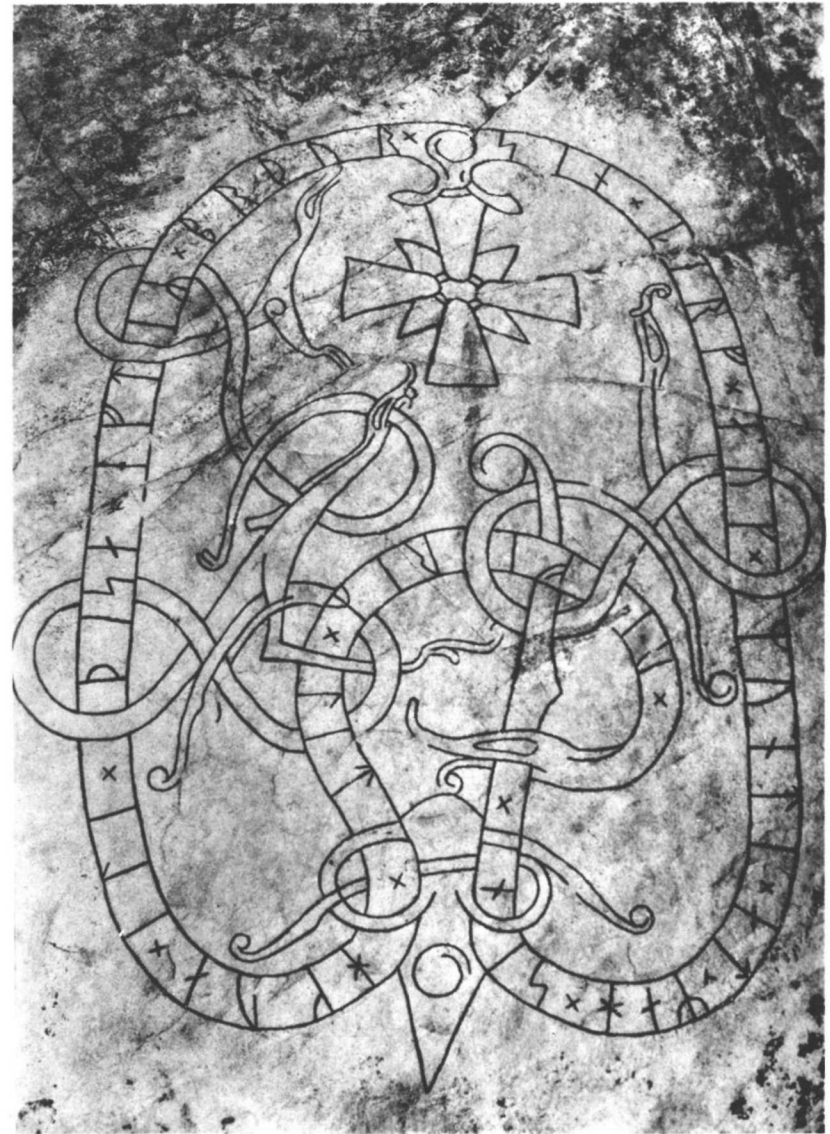
U 89. Skälby, Järfälla sn.



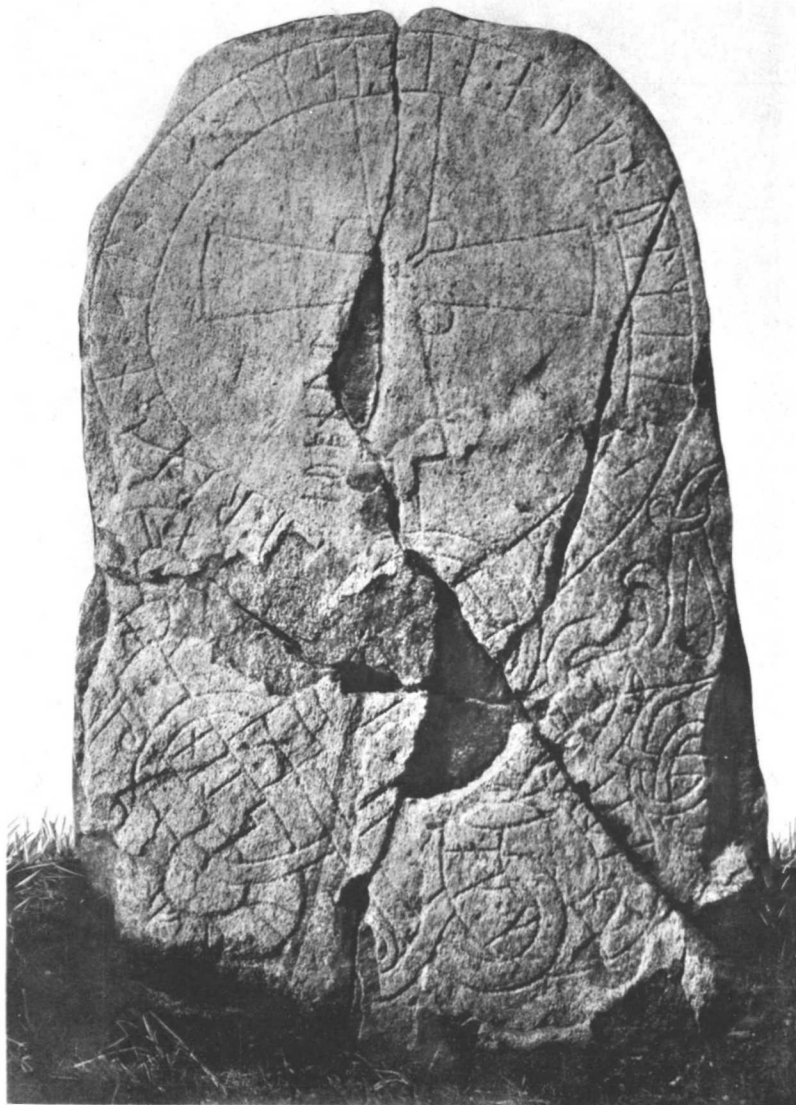
U 89. Skälby, Järfälla sn.



U 90. Säby, Järfälla sn.



U 90. Säby, Järfälla sn.



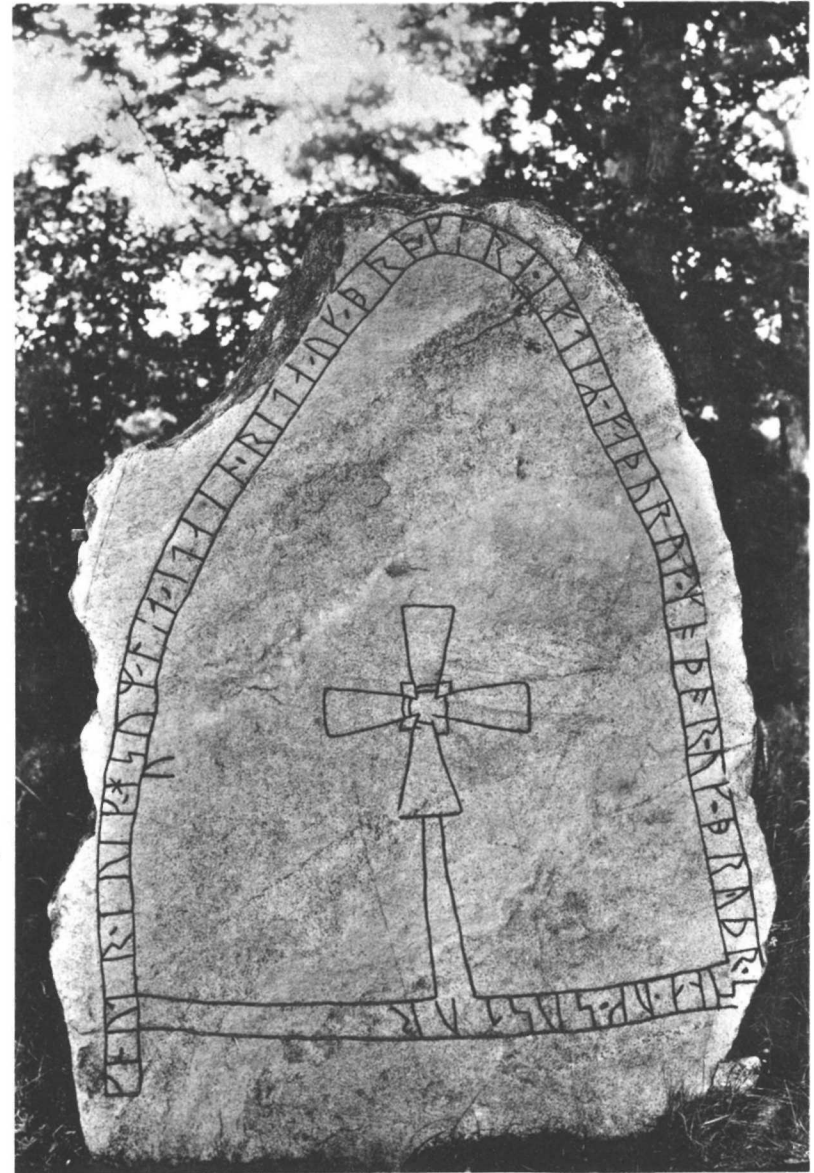
U 91. Vible, Järfälla sn.



U 91. Vible, Järfälla sn.



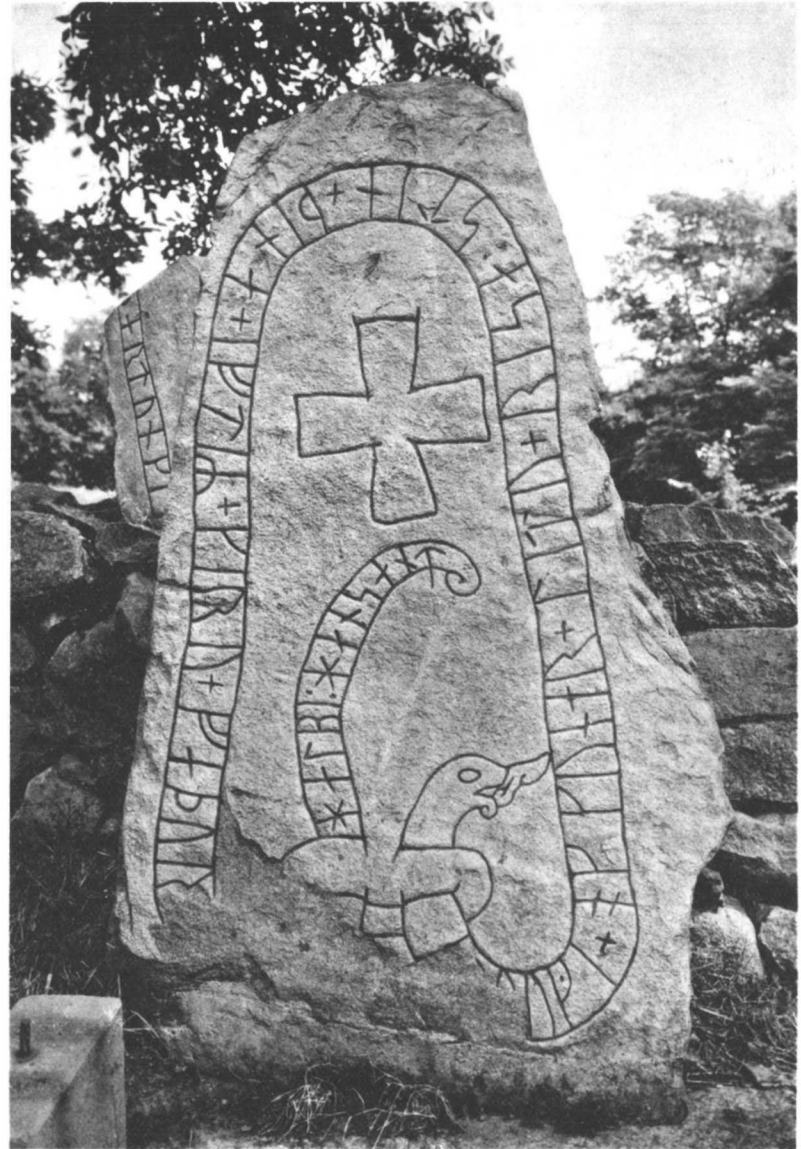
U 92. Vible, Järfälla sn.



U 92. Vible, Järfälla sn.



U 94. Sollentuna kyrka.



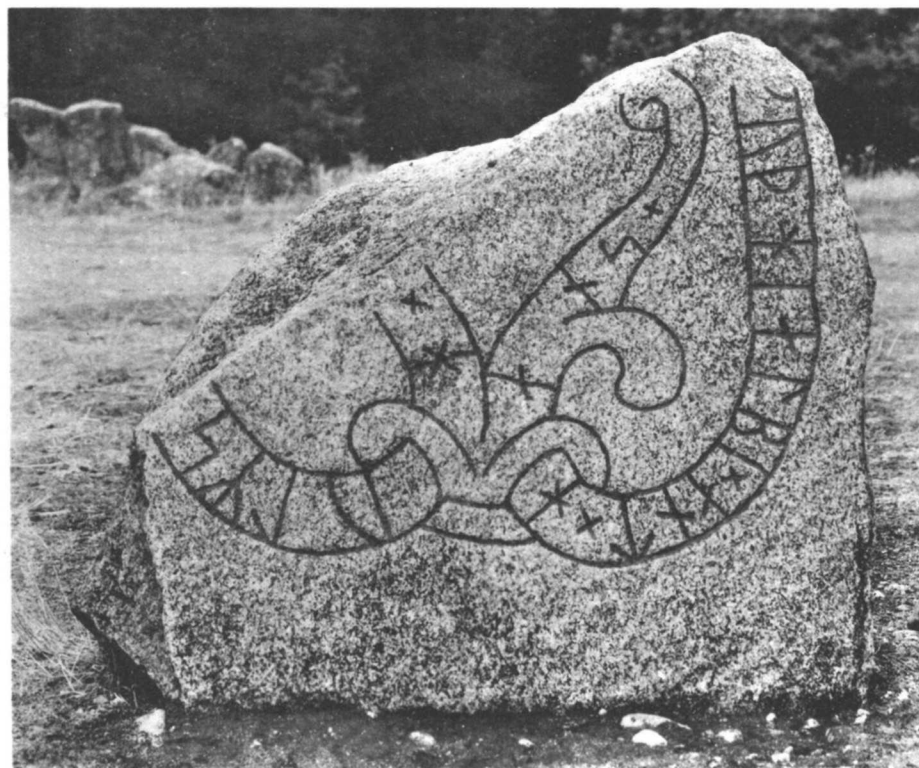
U 94. Sollentuna kyrka.



U 95. Sollentuna kyrka.



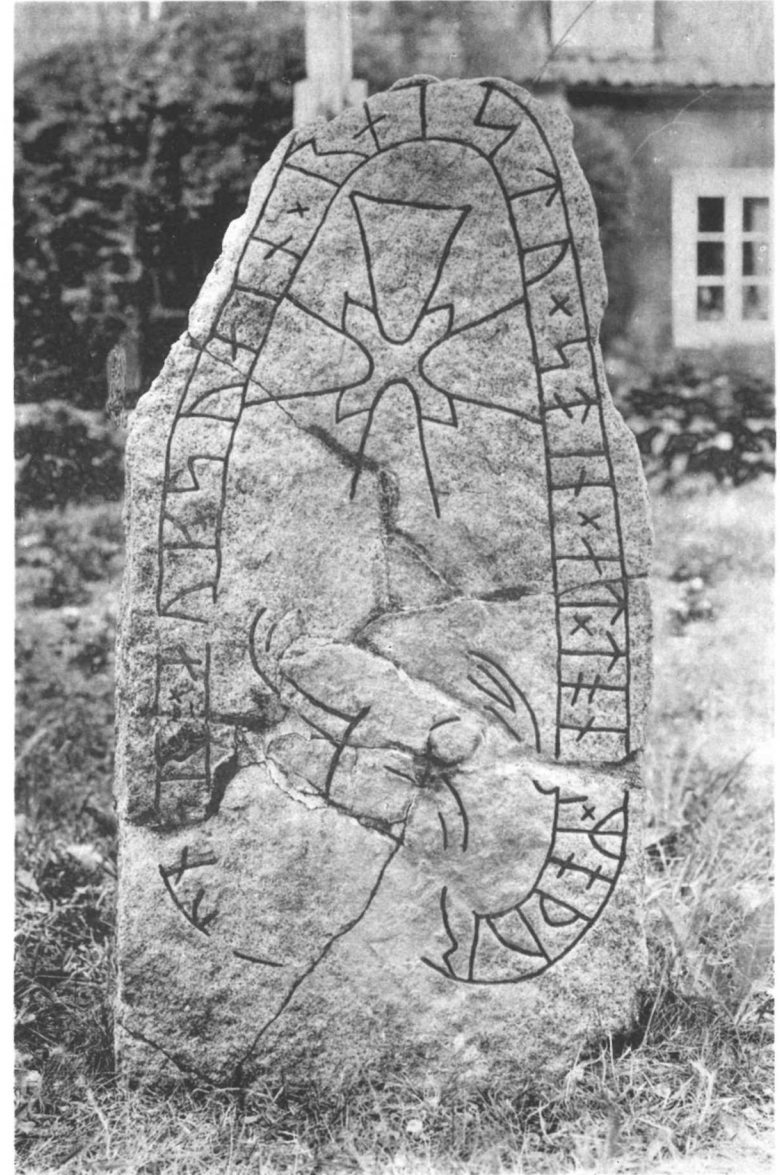
U 95. Sollentuna kyrka.



U 96. Edsberg, Sollentuna sn.



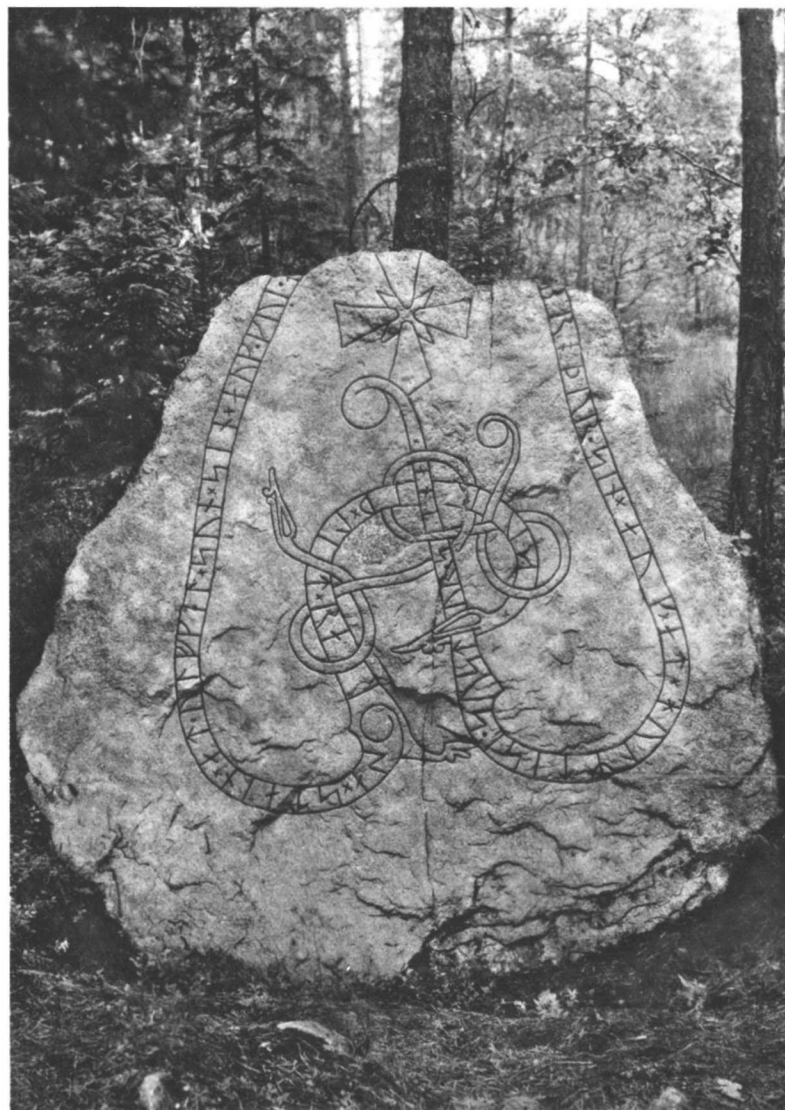
U 99. Skillinge, Sollentuna sn.



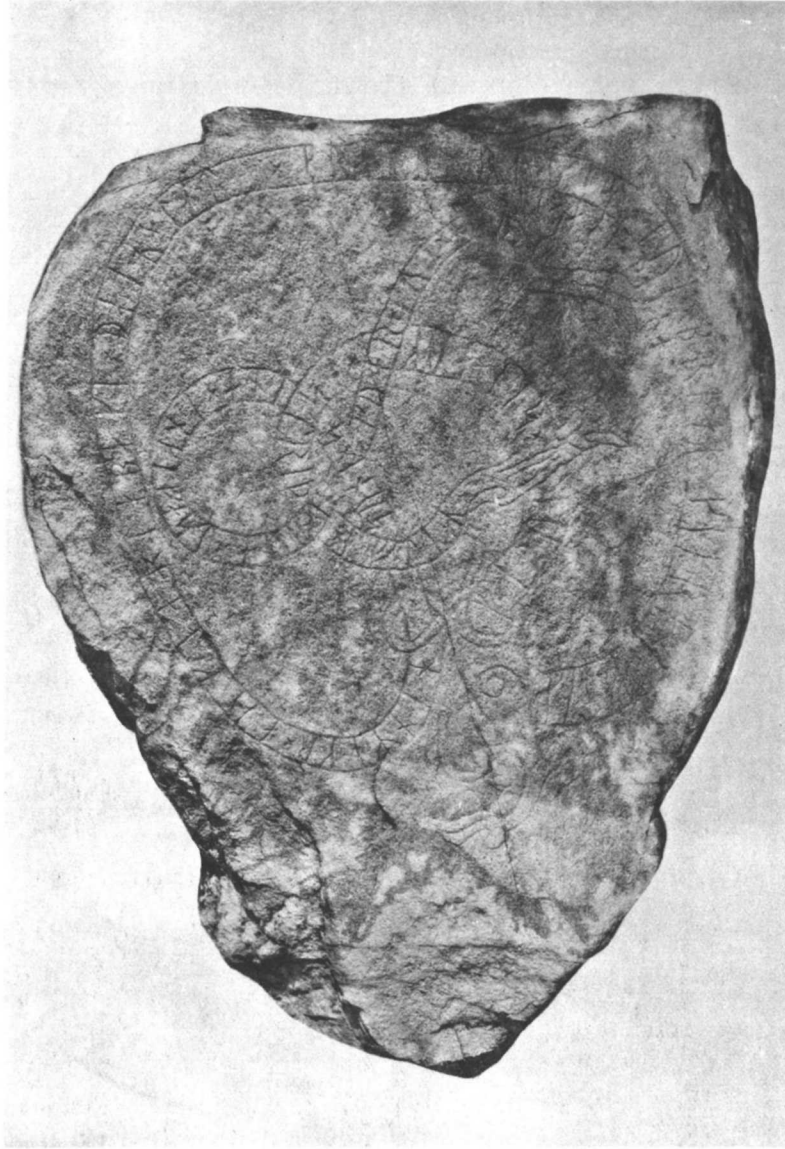
U 106. Prästgården, Eds sn.



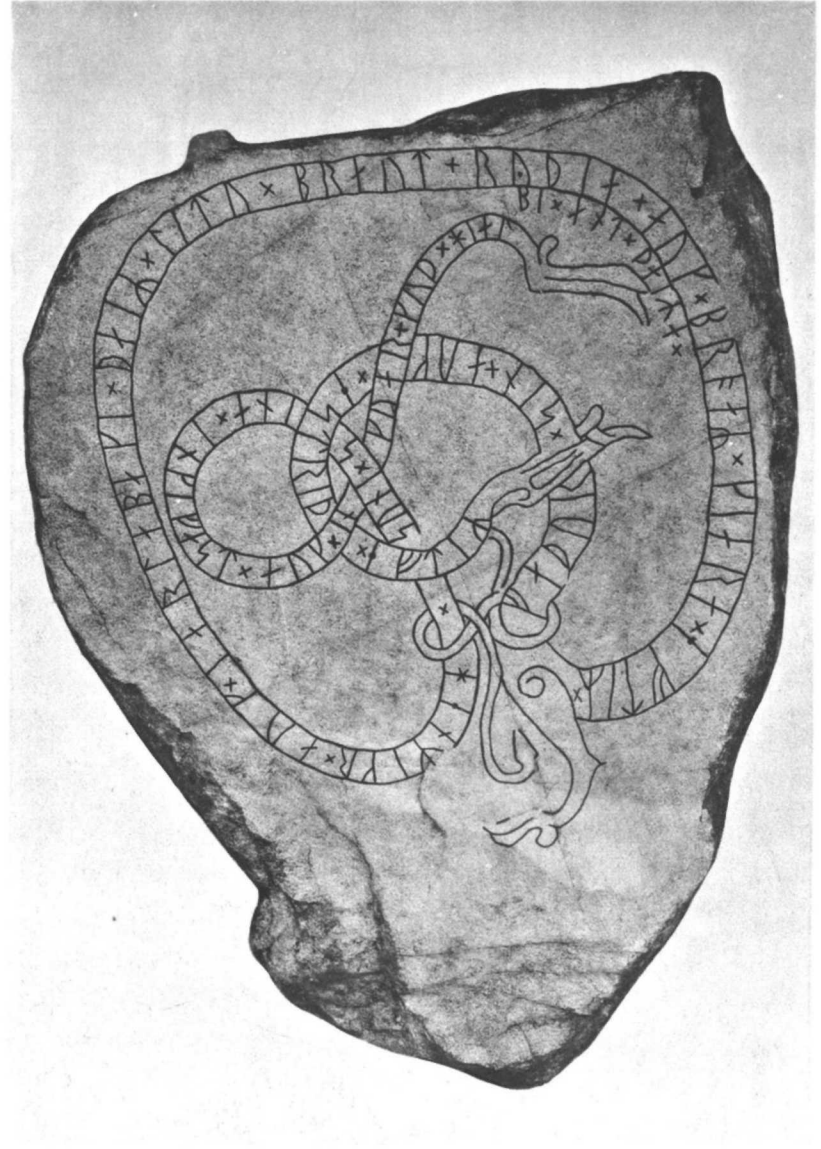
U 100. Skälby, Sollentuna sn.



U 100. Skälby, Sollentuna sn.



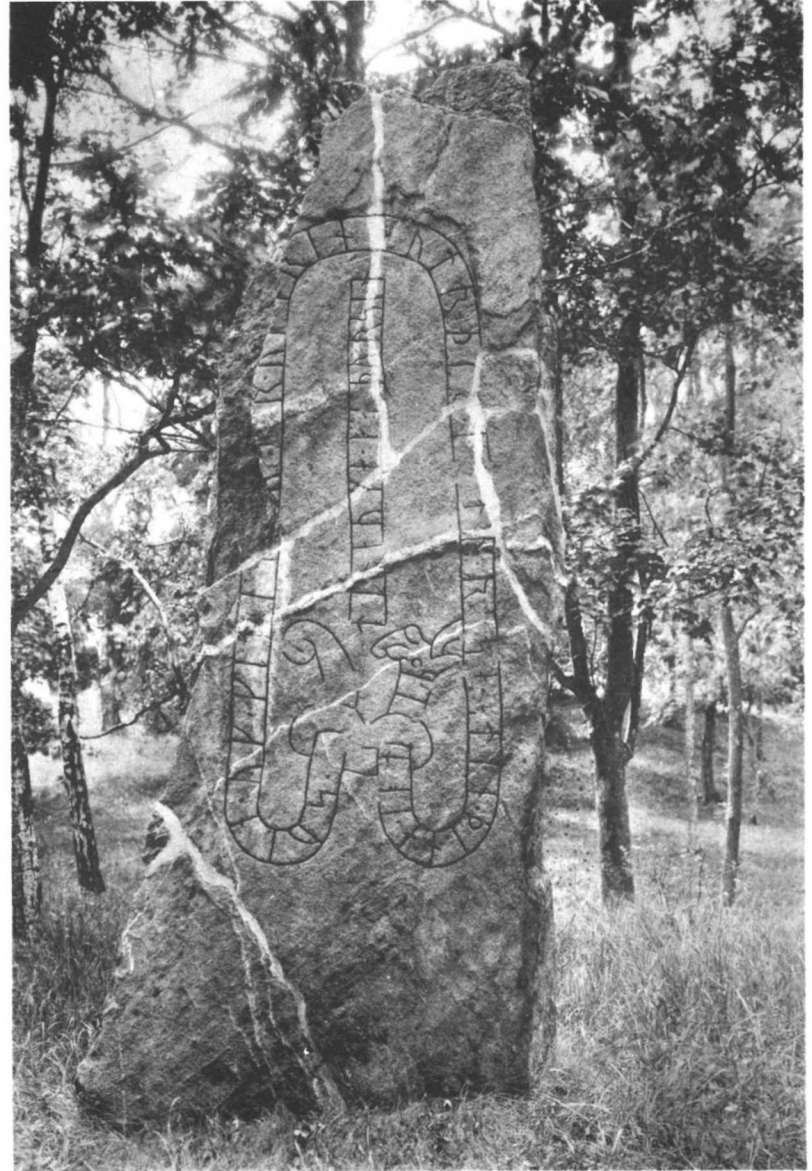
U 101. S. Sätra, Sollentuna sn.



U 101. S. Sätra, Sollentuna sn.



U 103. Ytterby, Sollentuna sn.



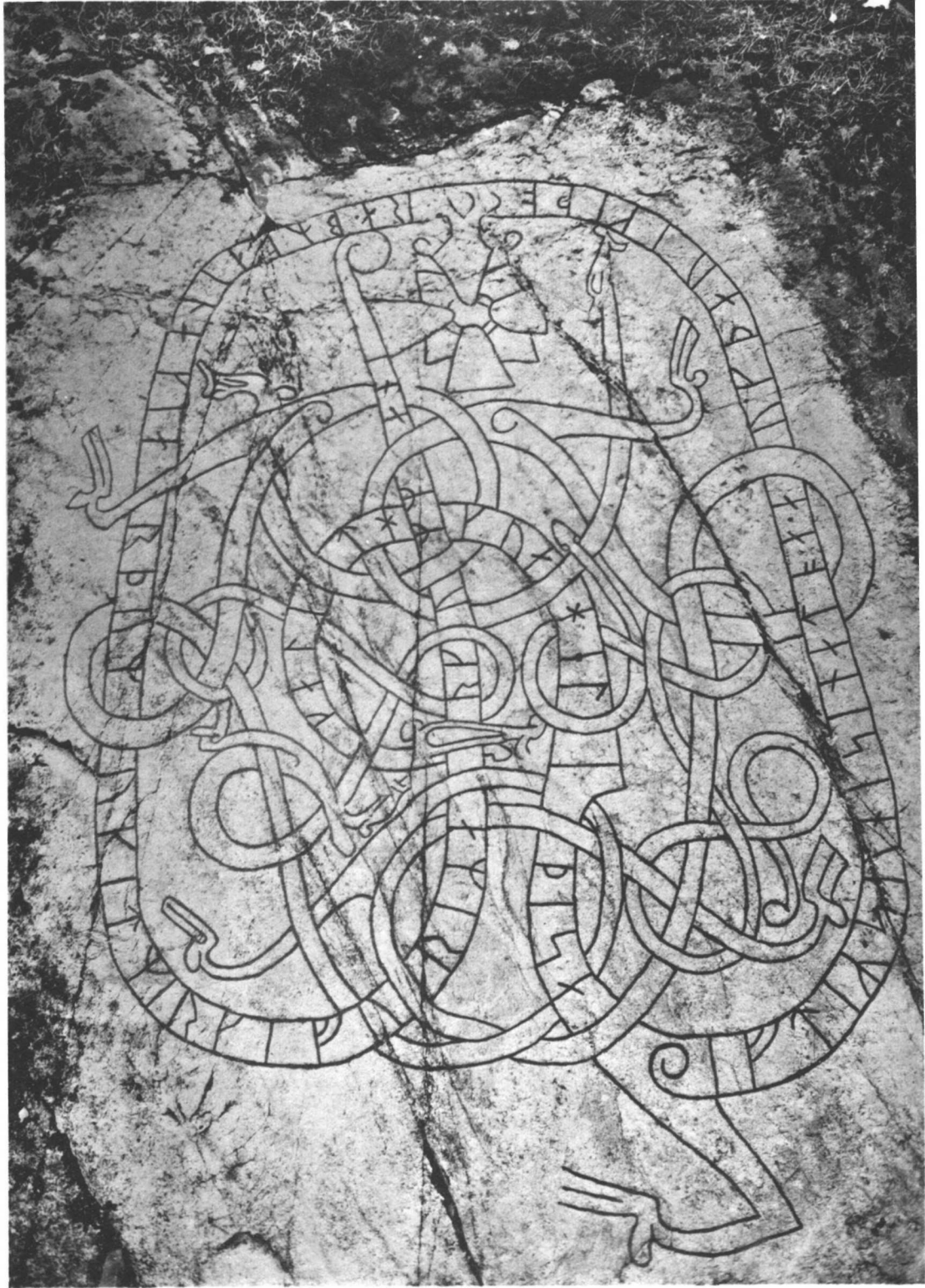
U 103. Ytterby, Sollentuna sn.
Nu vid Sollentunaholm.



U 101. S. Sättra, Sollentuna sn.



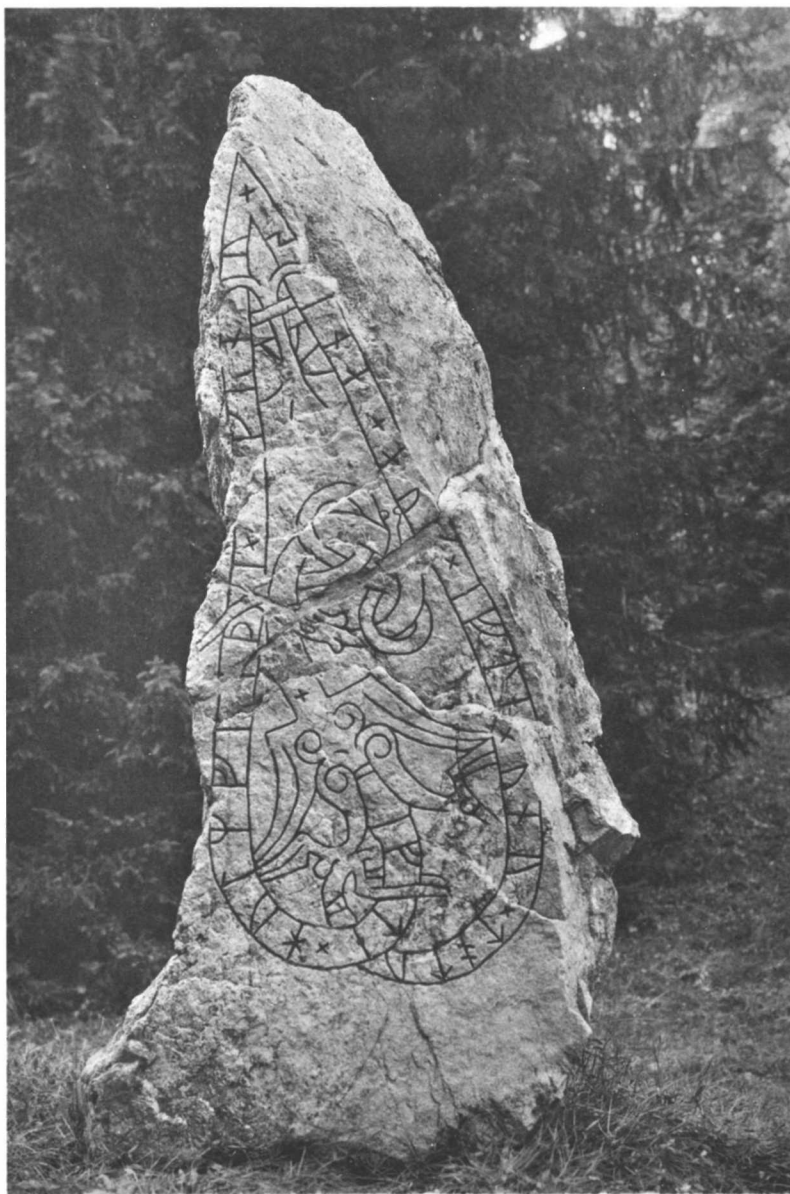
U 102. Viby, Sollentuna sn.



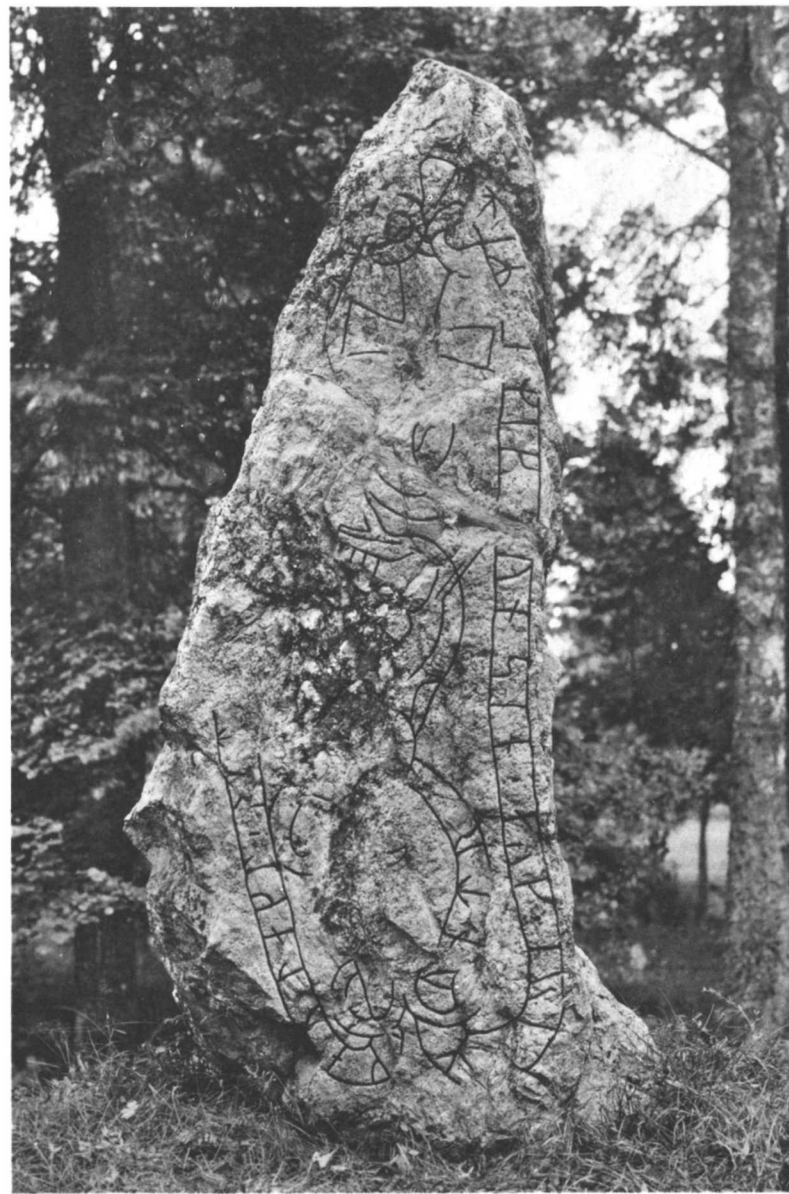
U 102. Viby, Sollentuna sn.



U 104. Eds kyrka.
Nu i Ashmolean Museum, Oxford.



U 107. Antuna, Eds sn.



U 107. Antuna, Eds sn.



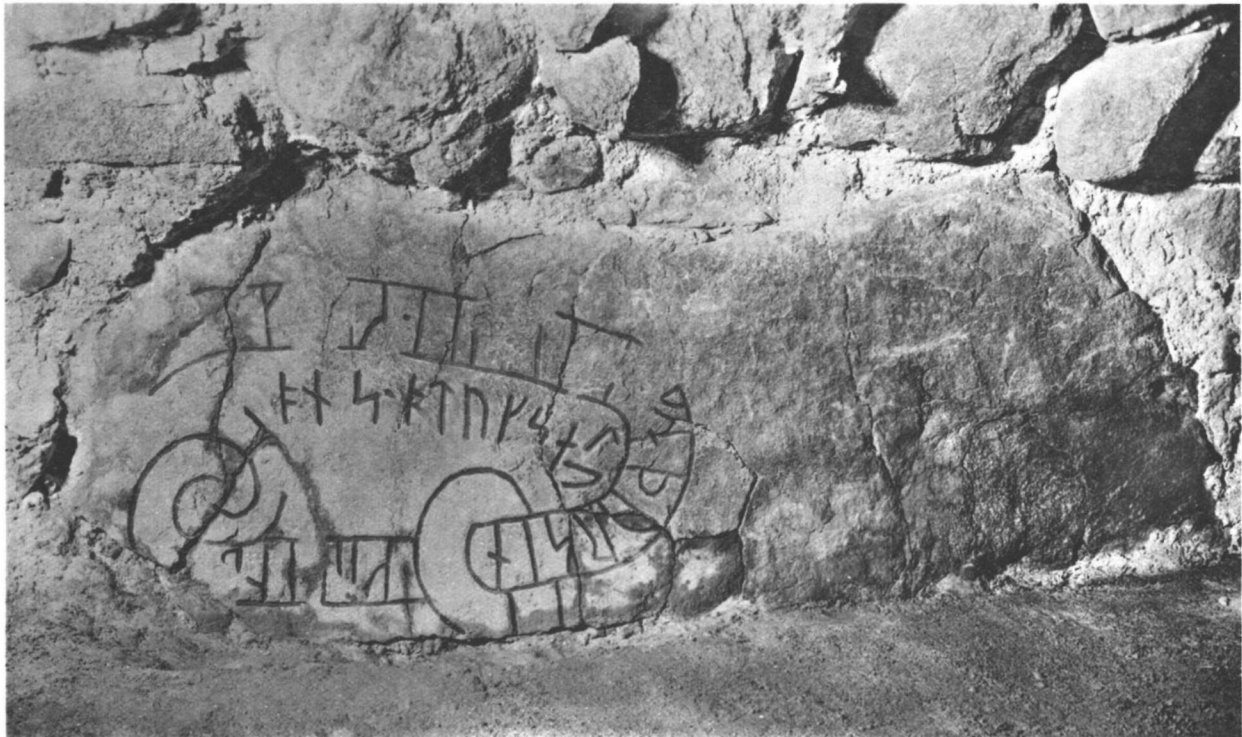
U 108. Bisslinge, Eds sn.



U 110. Bisslinge, Eds sn.



U 108. Bisslinge, Eds sn.



U 108. Bisslinge, Eds sn.



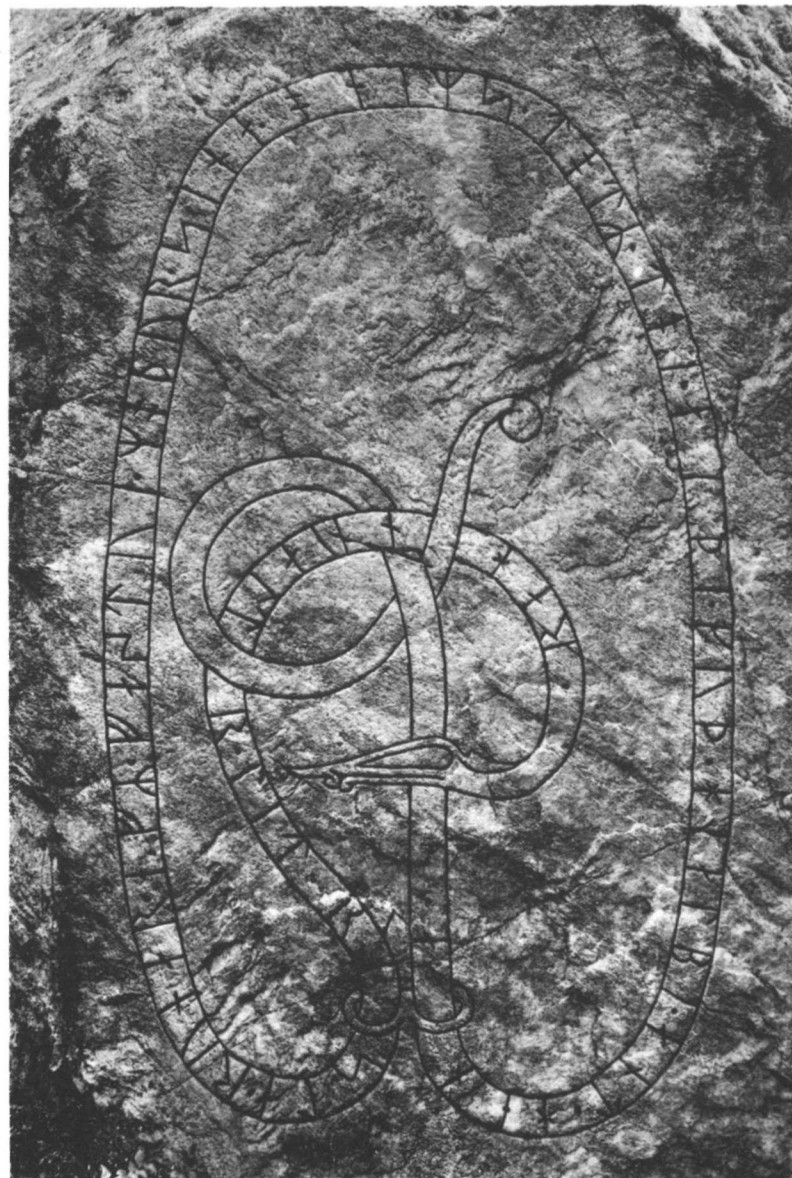
U 108. Bisslinge, Eds sn.



U 108. Bisslinge, Eds sn.



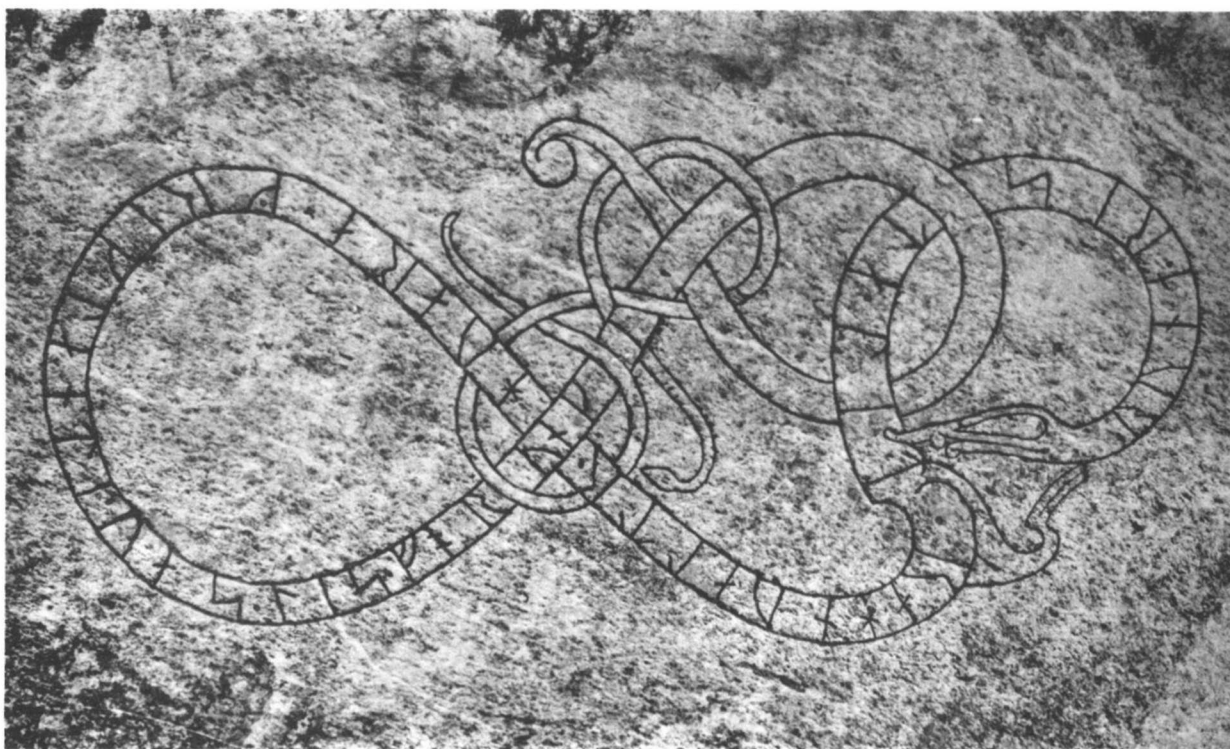
U 112. Kyrkstigen, Eds sn.



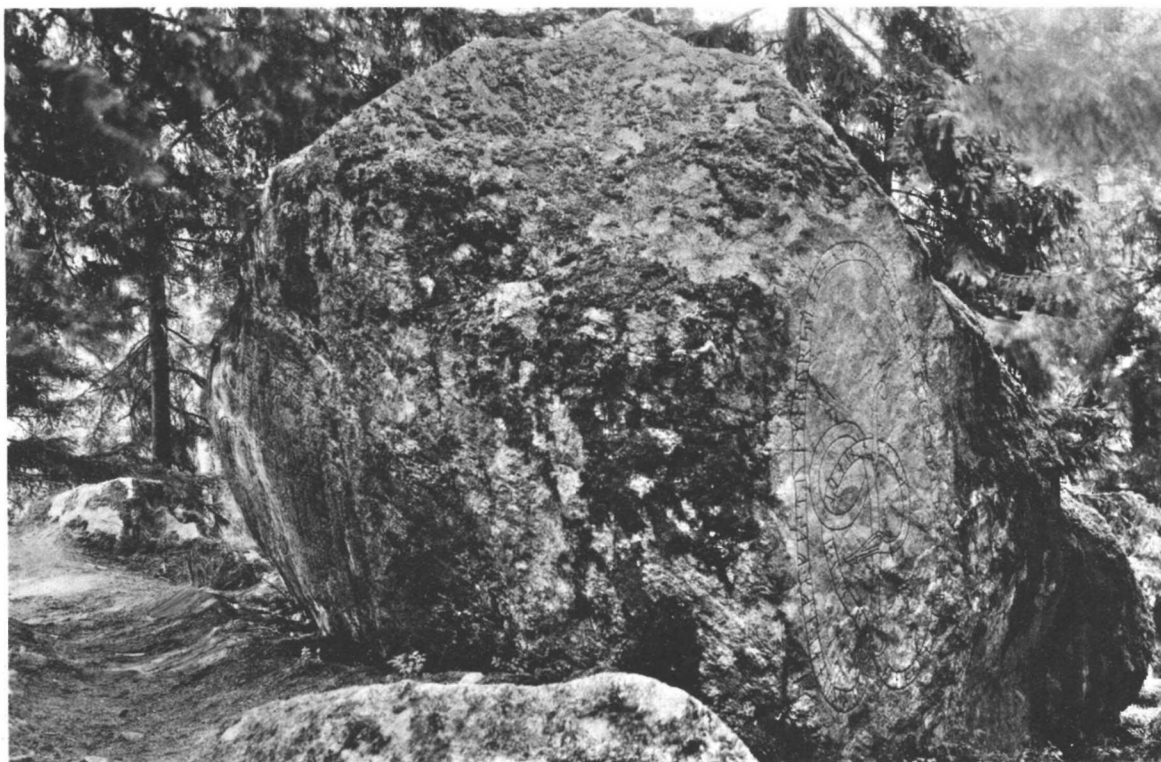
U 112. Kyrkstigen, Eds sn.



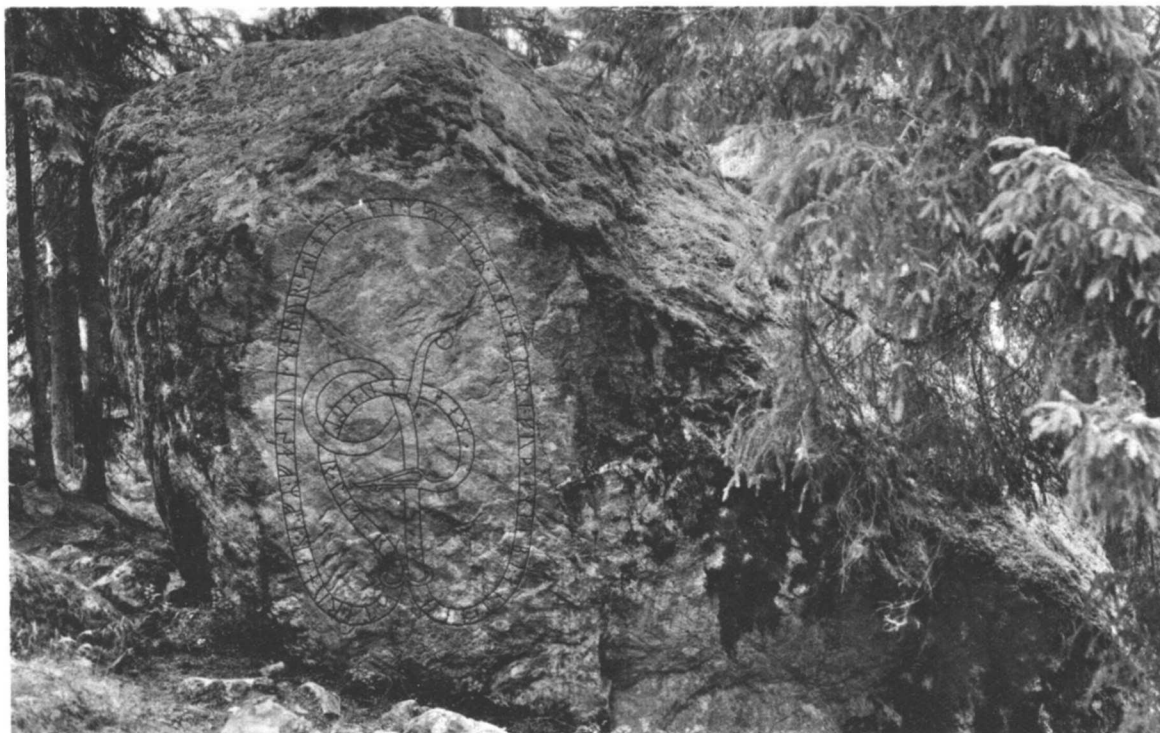
U 112. Kyrkstigen, Eds sn.



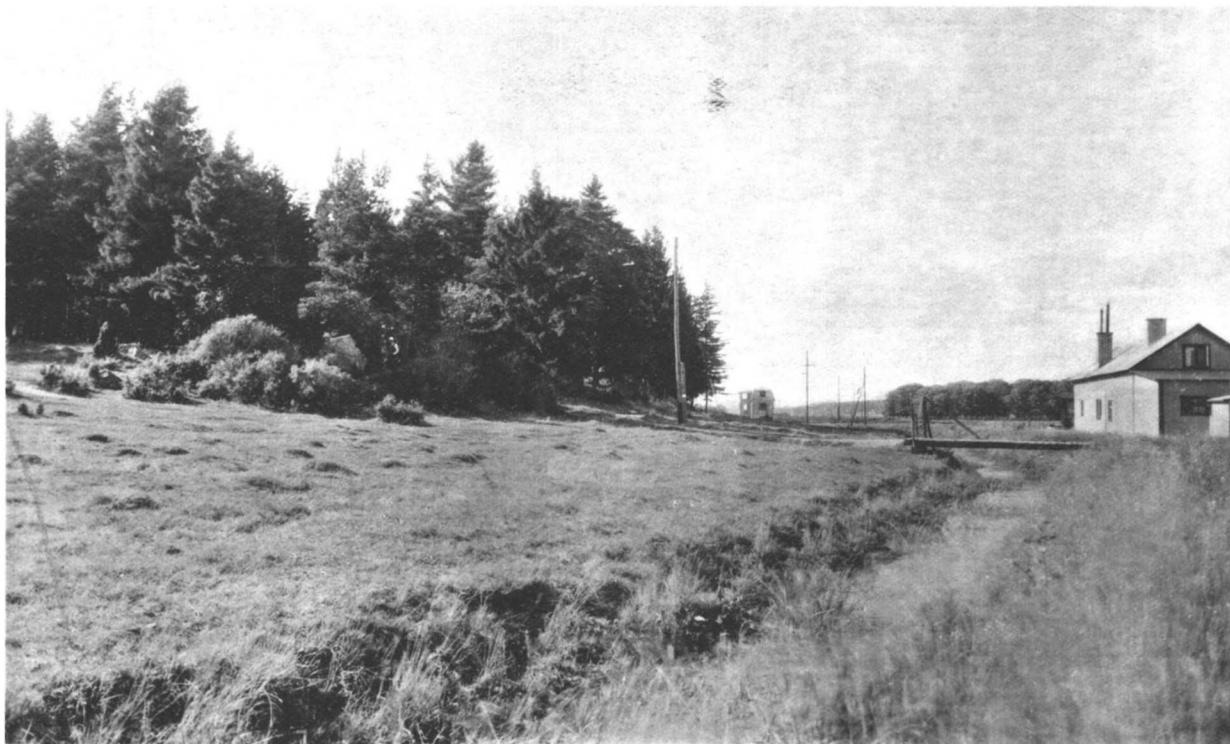
U 112. Kyrkstigen, Eds sn.



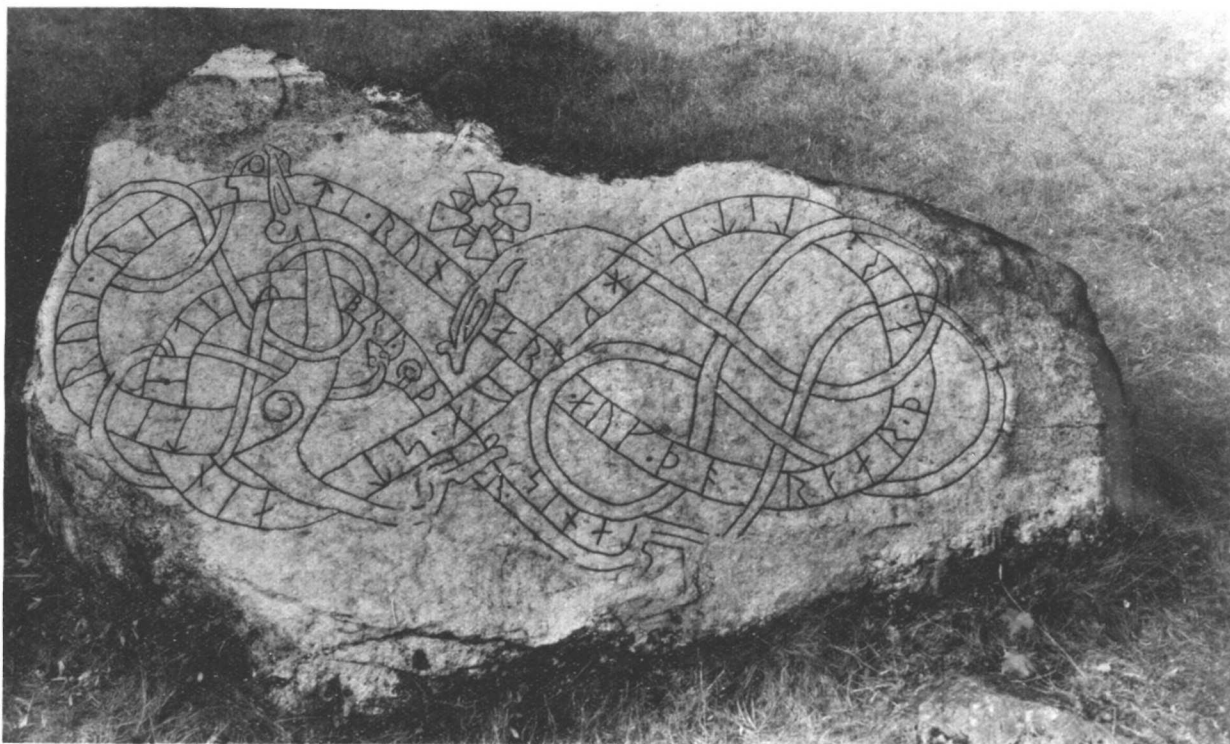
U 112. Kyrkstigen, Eds sn.



U 112. Kyrkstigen, Eds sn.



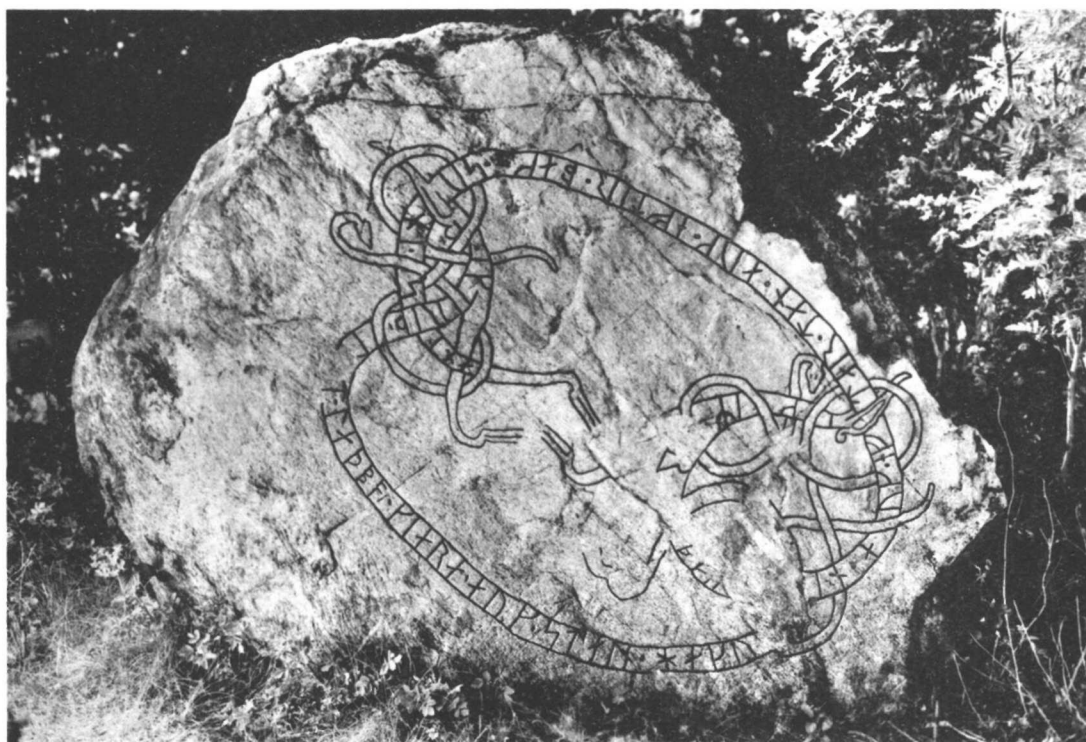
U 114. Runby, Eds sn.



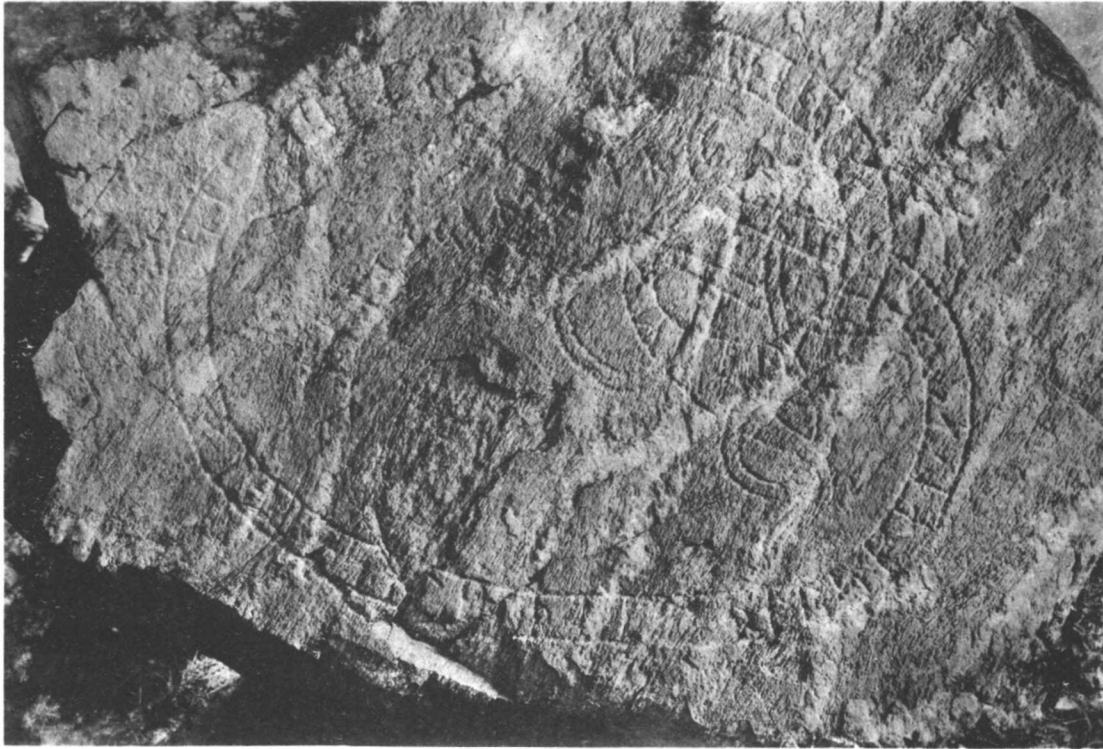
U 116. Älvsunda, Eds sn.



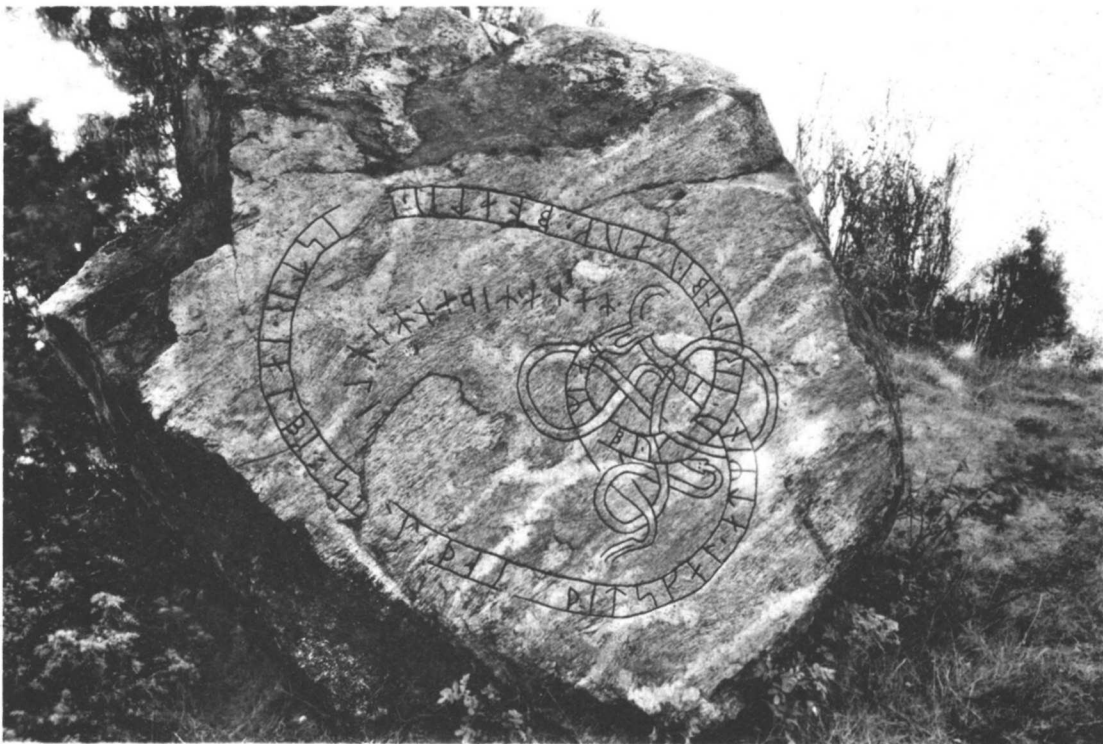
U 114. Runby, Eds sn.



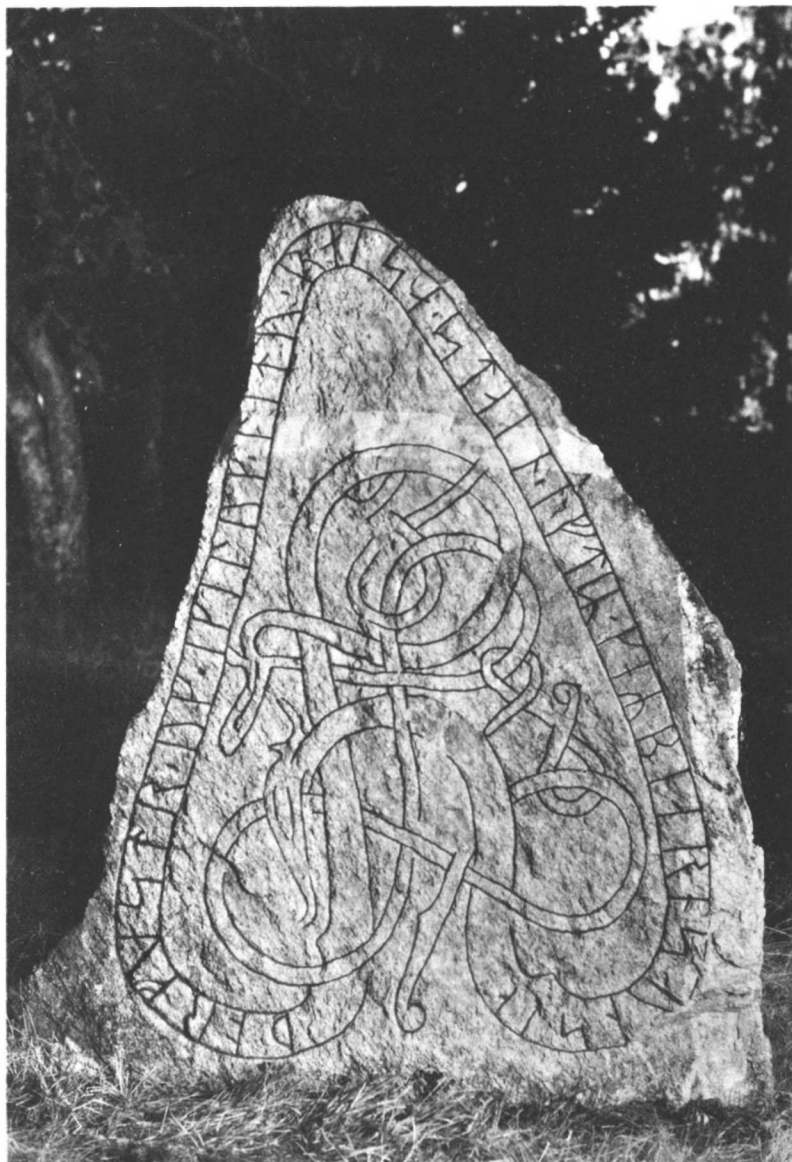
U 114. Runby, Eds sn.



U 114. Runby, Eds sn.



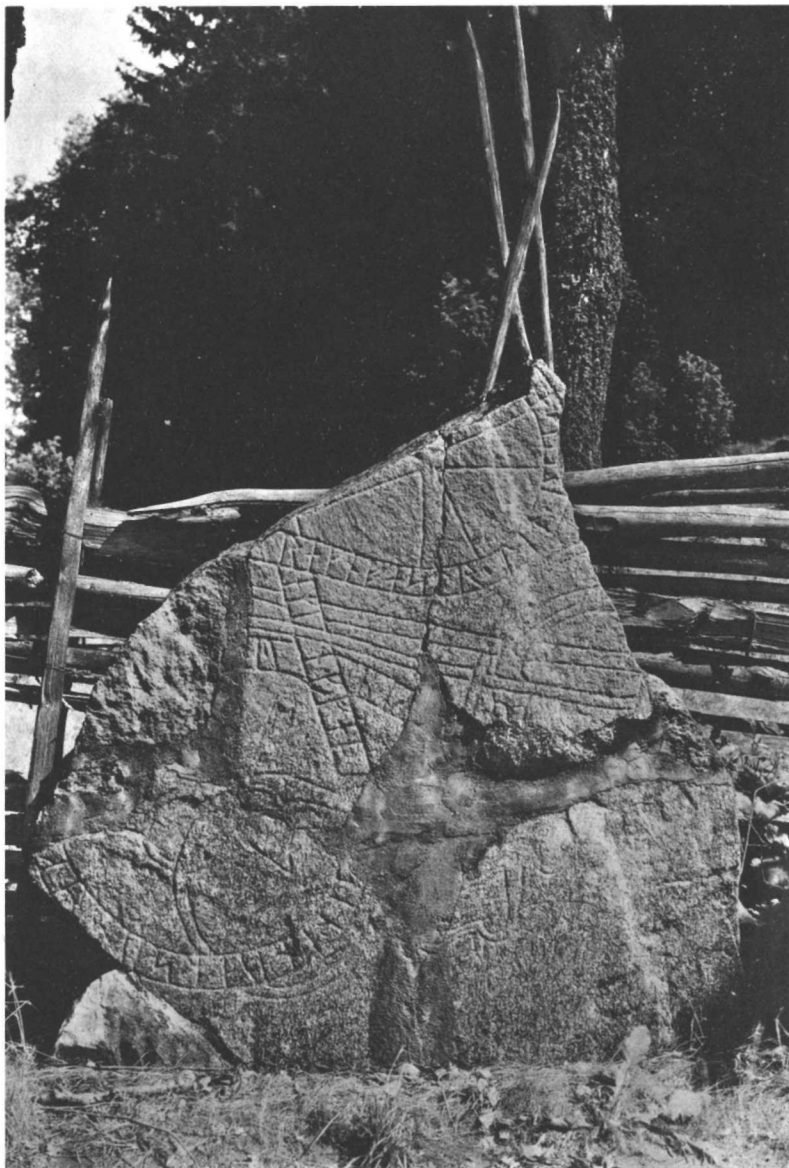
U 114. Runby, Eds sn.



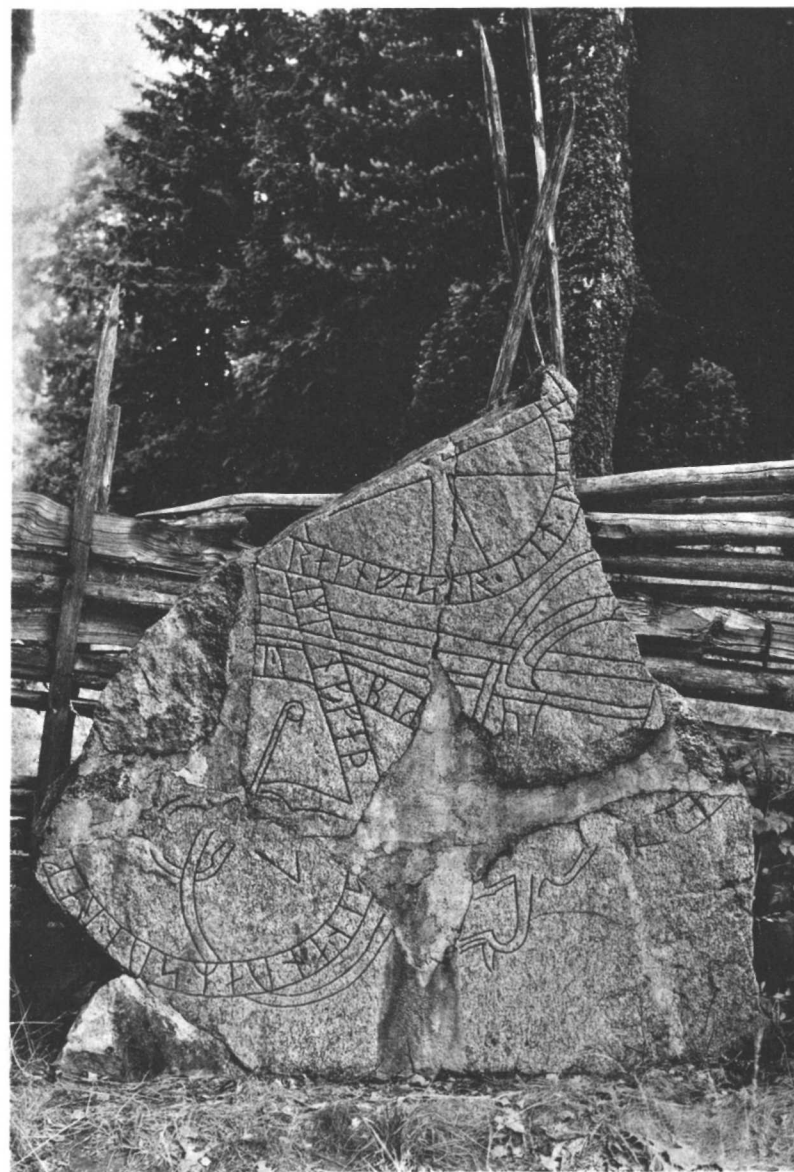
U 117. Älvsunda, Eds sn.



U 119. Älvsunda, Eds sn.
Nu vid Antuna.



U 118. Älvsunda, Eds sn.



U 118. Älvsunda, Eds sn.



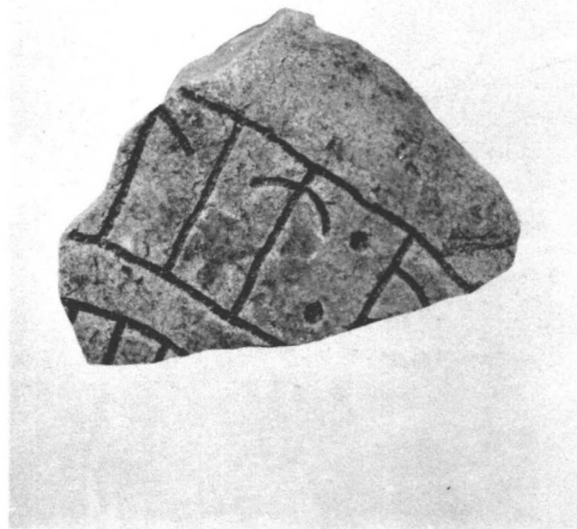
U 121. St. Frösunda, Solna sn.



U 124. Karlberg, Stenbrottet, Solna sn.



U 120. Solna kyrka.



U 126. Överjärva, Solna sn.
Nu i Statens Historiska Museum.



U 125. Tomteboda, Solna sn.
Foto E. Brate 1903.



U 125. Tomteboda, Solna sn.



U 126. Överjärva, Solna sn.
Foto E. Brate 1902.



U 127. Danderyds kyrka.



U 128. Danderyds kyrka.

U 128. Danderyds kyrka.



U 129. Danderyds kyrka.



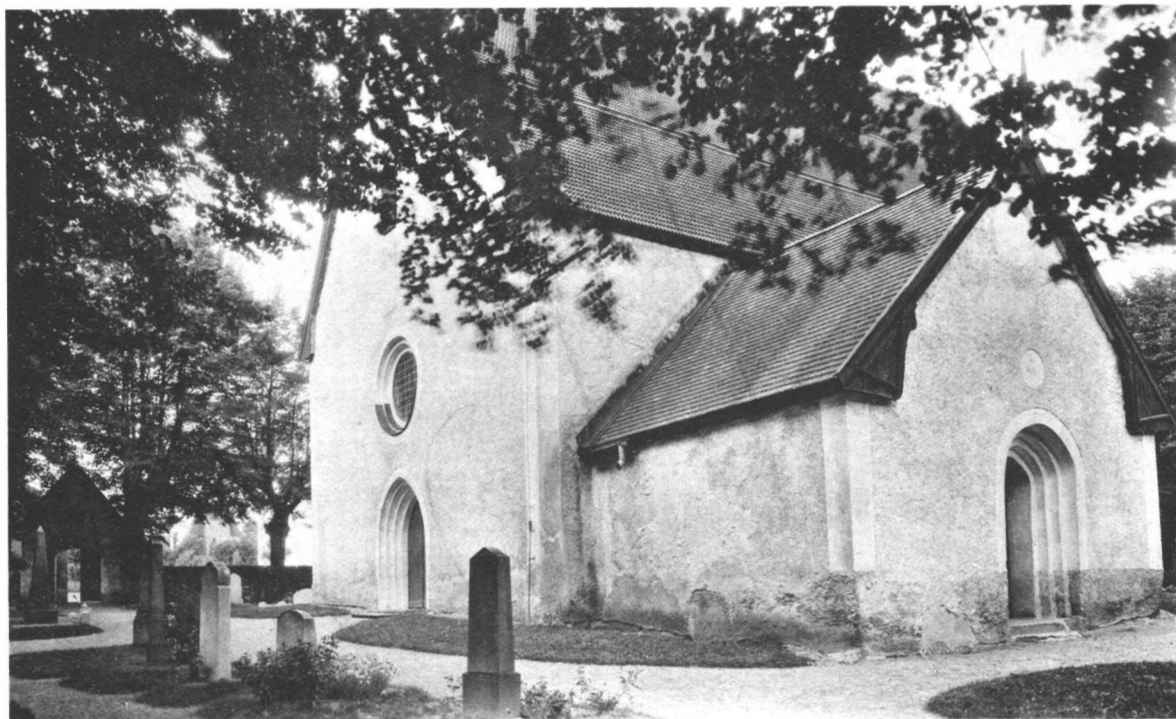
U 129. Danderyds kyrka.



U 130. Nora, Danderyds sn.



U 130. Nora, Danderyds sn.



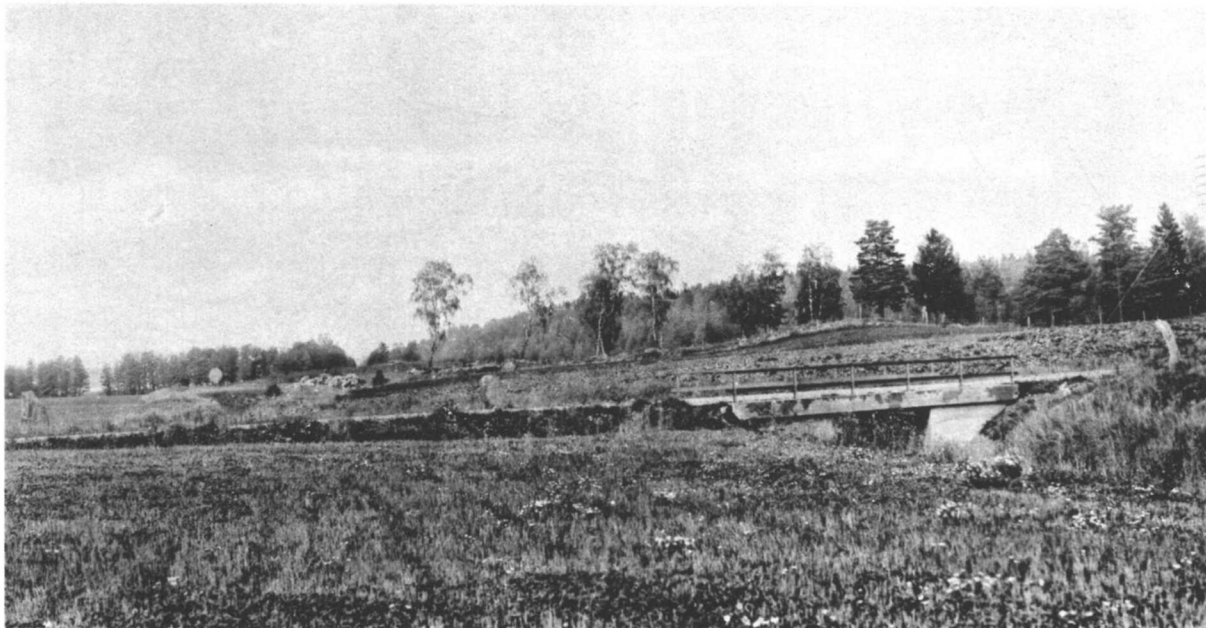
U 133. Täby kyrka.



U 131. Rinkeby, Danderyds sn.



U 133. Täby kyrka.



U 186

U 187

U 185

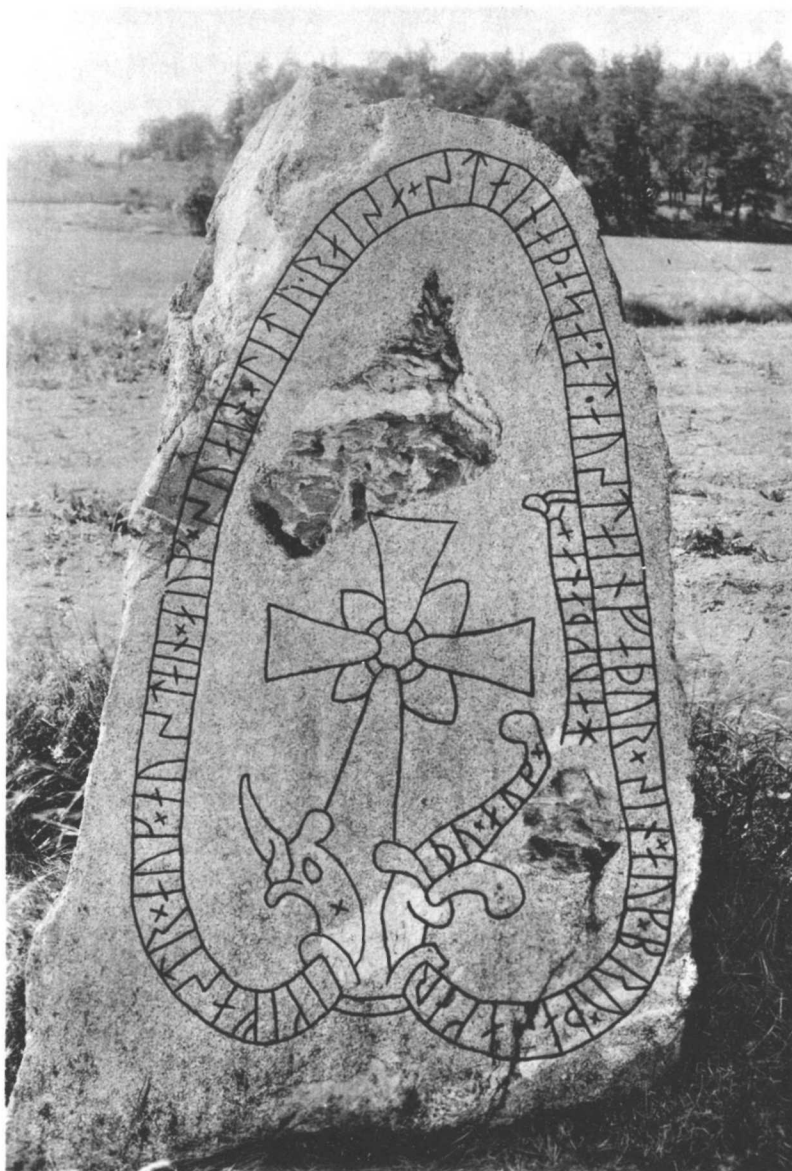
U 135—137. Broby, Täby sn.



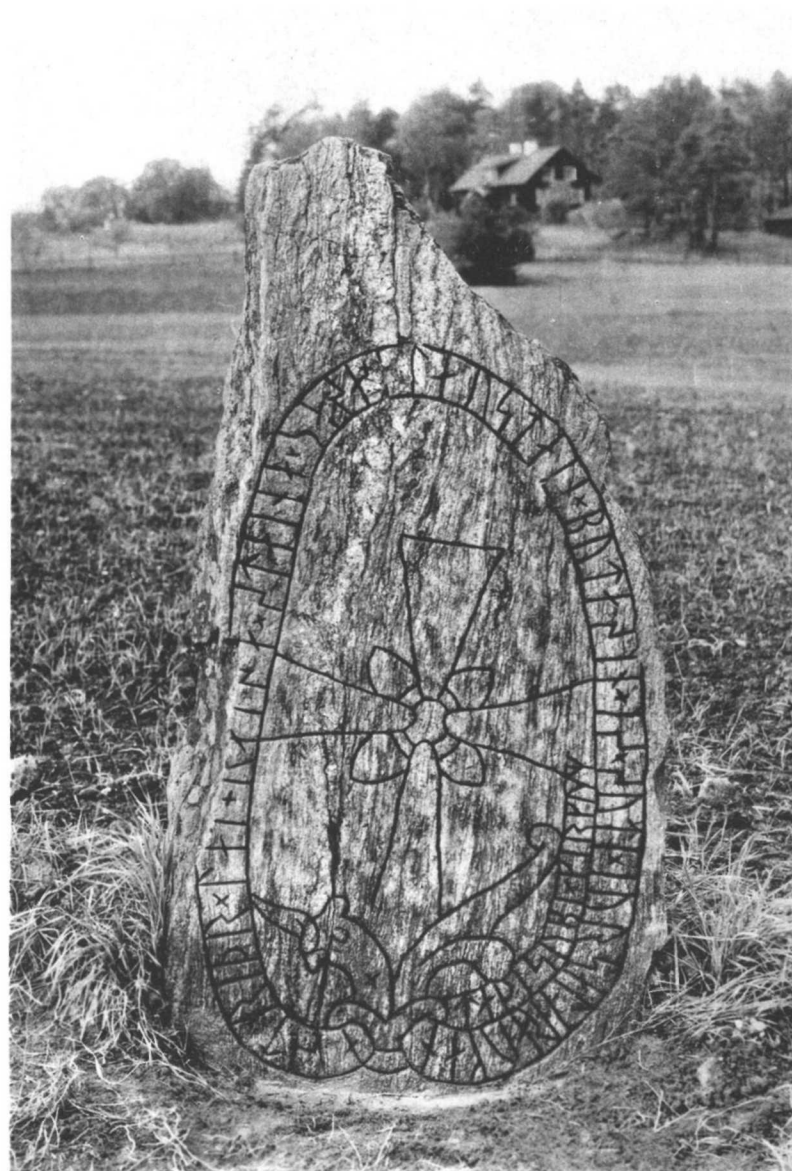
U 187

U 185

U 135—137. Broby, Täby sn.



U 135. Broby, Täby sn.



U 136. Broby, Täby sn.



U 137. Broby, Täby sn.



U 142. Fällbro, Täby sn.